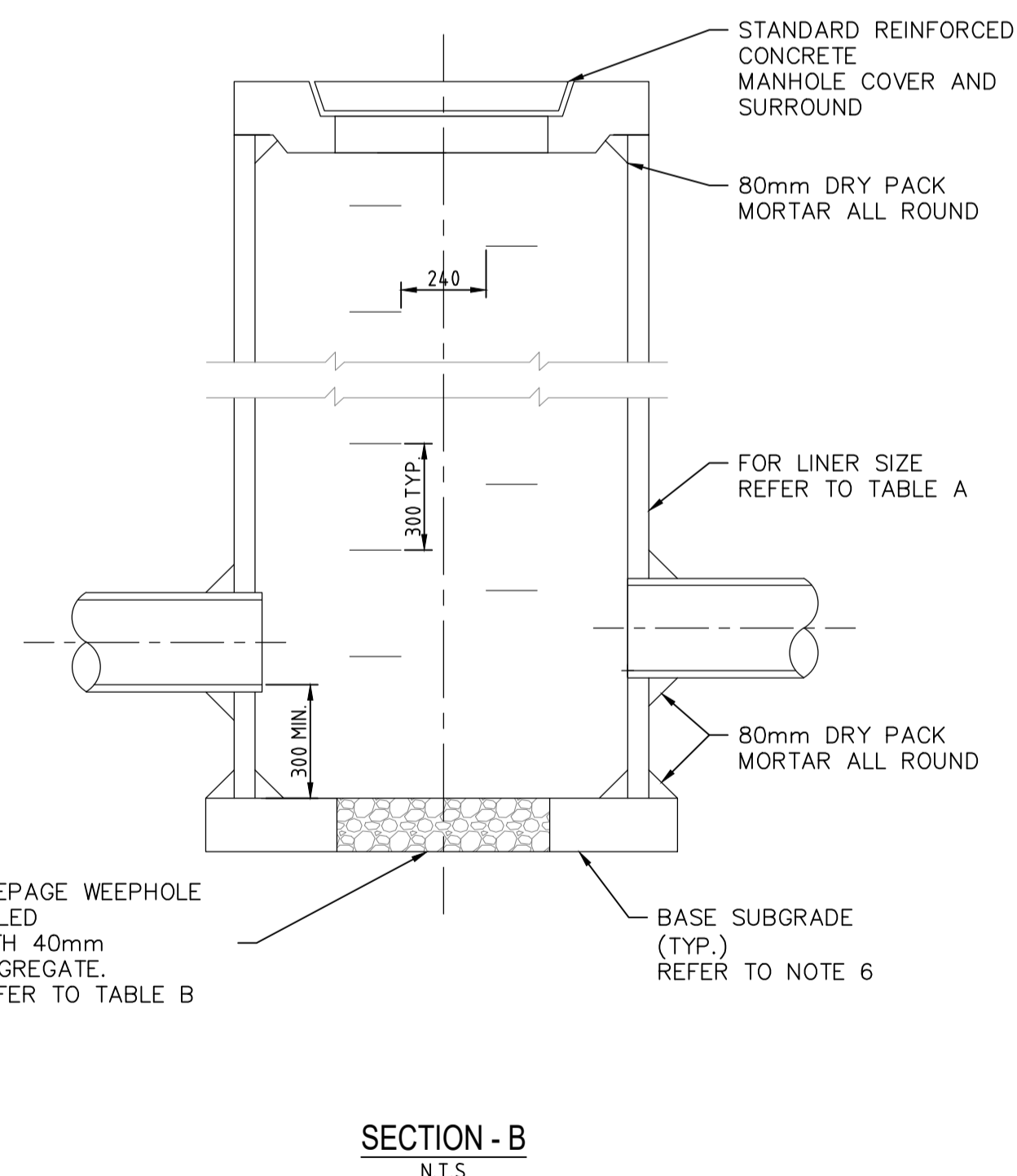
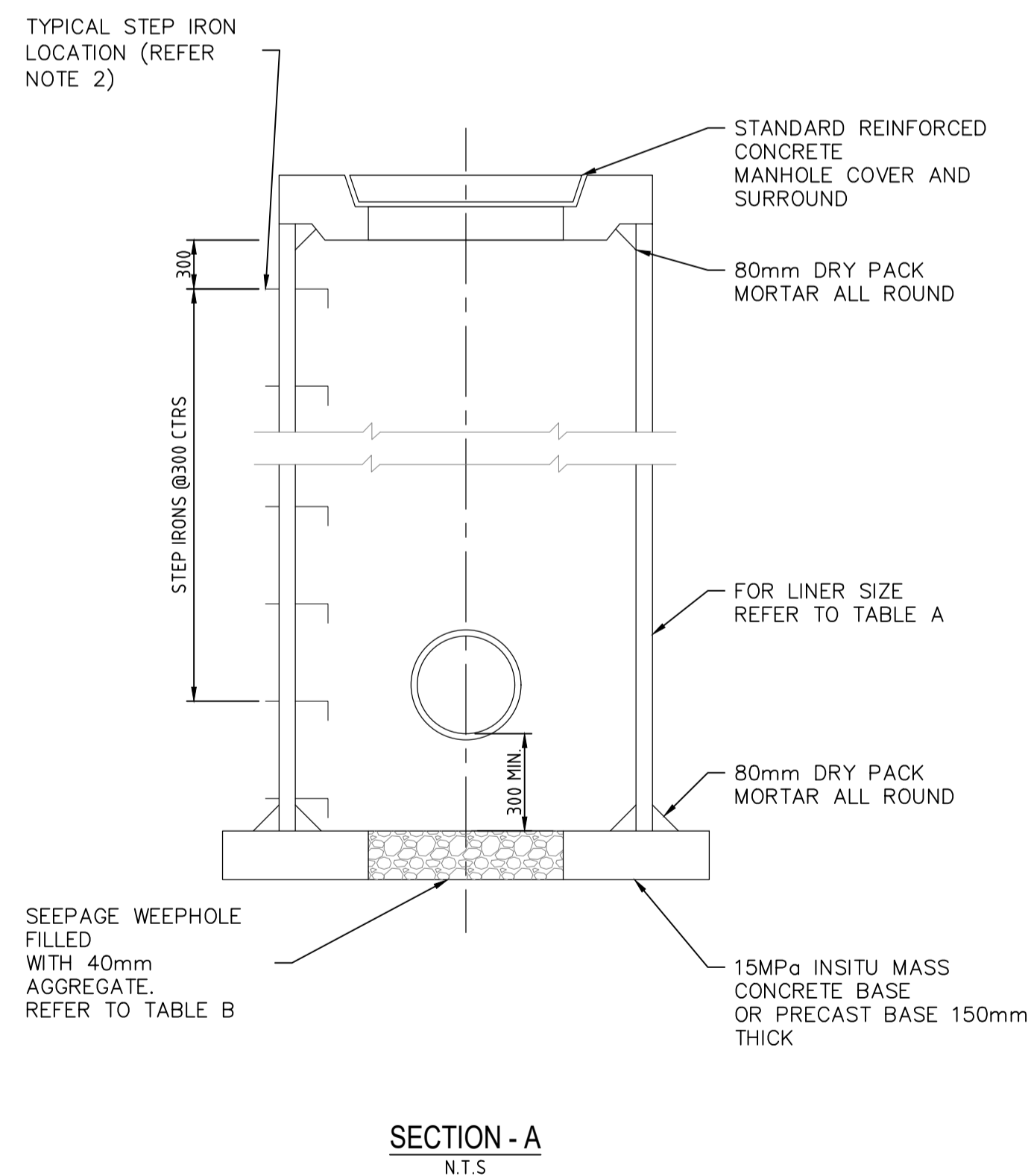


NOM. LINER SIZE (mm)	PIPE SIZE MAX. (mm)	LINER TYPE
φ1050	φ450	CONCRETE
φ1200	φ600	CONCRETE
φ1500	φ750	CONCRETE
φ1800	φ900	CONCRETE

FOR PIPES φ1200 AND LARGER INSTALL A CUSTOM CHAMBER TO SUIT.

LINER SIZE MIN. (mm)	SOAKAGE HOLE DIAMETER (mm)
φ1050	600
φ1200	600
φ1500	900
φ1800	1200



**DRAINAGE NOTES :**

1. CONCRETE TO BE 20mm NOM AGGREGATE AND HAVE A MINIMUM COMPRESSIVE STRENGTH AT 28 DAYS OF 20MPa FOR INSITU BASE AND 40MPa FOR PRECAST UNITS.
2. ALL COMPONENTS SHALL BE DESIGNED TO ACCEPT LOADING IN ACCORDANCE WITH AS3725 AND MANUFACTURER'S GUIDELINES.
3. IN HIGH GROUND WATER AREAS THE BASE AND PIT MUST BE SEALED AND BENCHED.
4. STEP IRONS TO BE INSTALLED IN PITS WHERE THE DEPTH FROM COVER TO TOP OF BASE EXCEEDS 600mm.
5. SUBGRADE TO BASE TO BE COMPACTED TO 95% M.M.D. PRIOR TO PLACING OF BASE.
6. BACKFILL SURROUNDING PIT TO BE TO 95% M.M.D.
7. ALL PITS TO HAVE A WEEP HOLE IN ACCORDANCE WITH TABLE B, UNLESS IN HIGH GROUND WATER AREAS, SEE NOTE 3.
8. A MAXIMUM OF THREE PIPE OPENINGS ARE ALLOWED IN ANY ONE PIT. A MINIMUM WALL WIDTH OF 250mm IS ALLOWED BETWEEN HOLES CUT FOR PIPE OPENINGS.
9. ALL PITS TO BE TRAPPED WITH MINIMUM 300mm DEPTH BELOW PIPE INVERT.
10. PIPES TO BE FINISHED FLUSH WITH INSIDE OF LINER AND MADE GOOD WITH MORTAR.
11. MORTAR TO BE 3:1 SAND:CEMENT MIXTURE

A:\Engineering\Standard Details\DWG\STD-D02 - TYPICAL JUNCTION PIT.dwg

Amendments		Scale	Date	By	Approved
		AS SHOWN			
			N/A		
No	Date	Revision		By	Approved
A	30/11/23	ISSUED FOR REVIEW		BV	NS

THIS DRAWING REMAINS THE PROPERTY OF THE SHIRE OF SERPENTINE JARRAHDALE AND SHALL NOT BE RETAINED, COPIED, OR USED, WITHOUT WRITTEN APPROVAL FROM THE DIRECTOR ENGINEERING SERVICES

Drawn	Date	Signet	Project
BC	30/11/23		
Designed	Date	Signet	
BV	30/11/23		
Checked	Date	Signet	
VB	30/11/23		
Manager Engineering Services		Signet	

**SHIRE OF SERPENTINE JARRAHDALE  
STANDARD DRAWINGS**

**DRAINAGE - TYPICAL JUNCTION PIT**

Sheet No:	1 OF 1
Revision No:	A
DWG No:	STD-D02