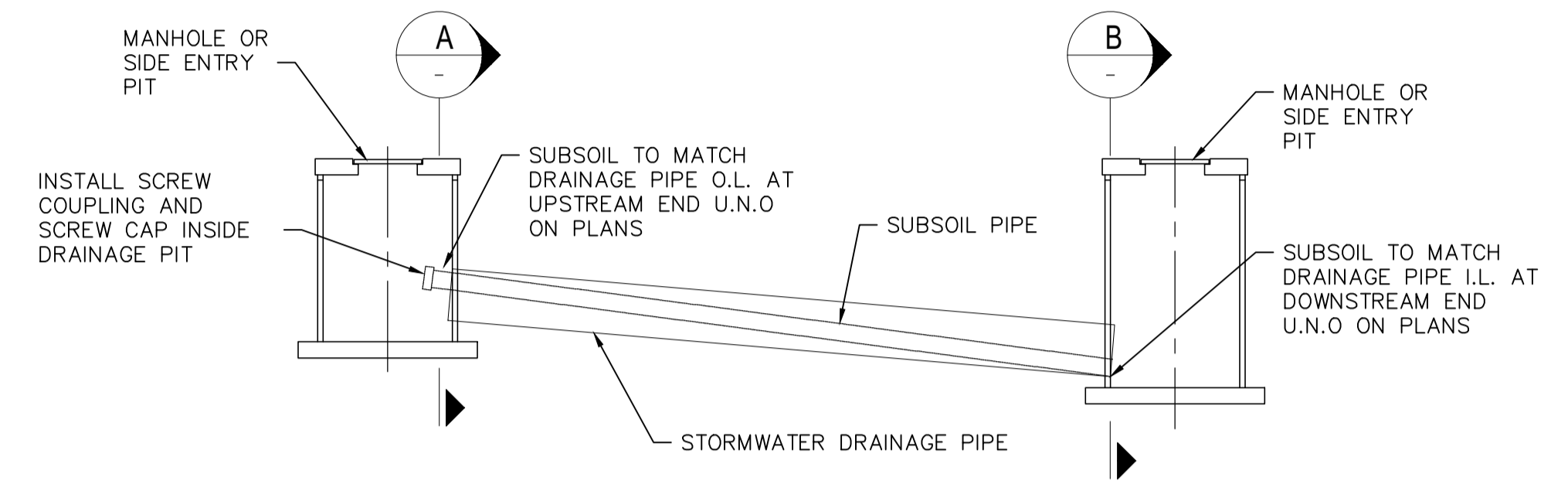
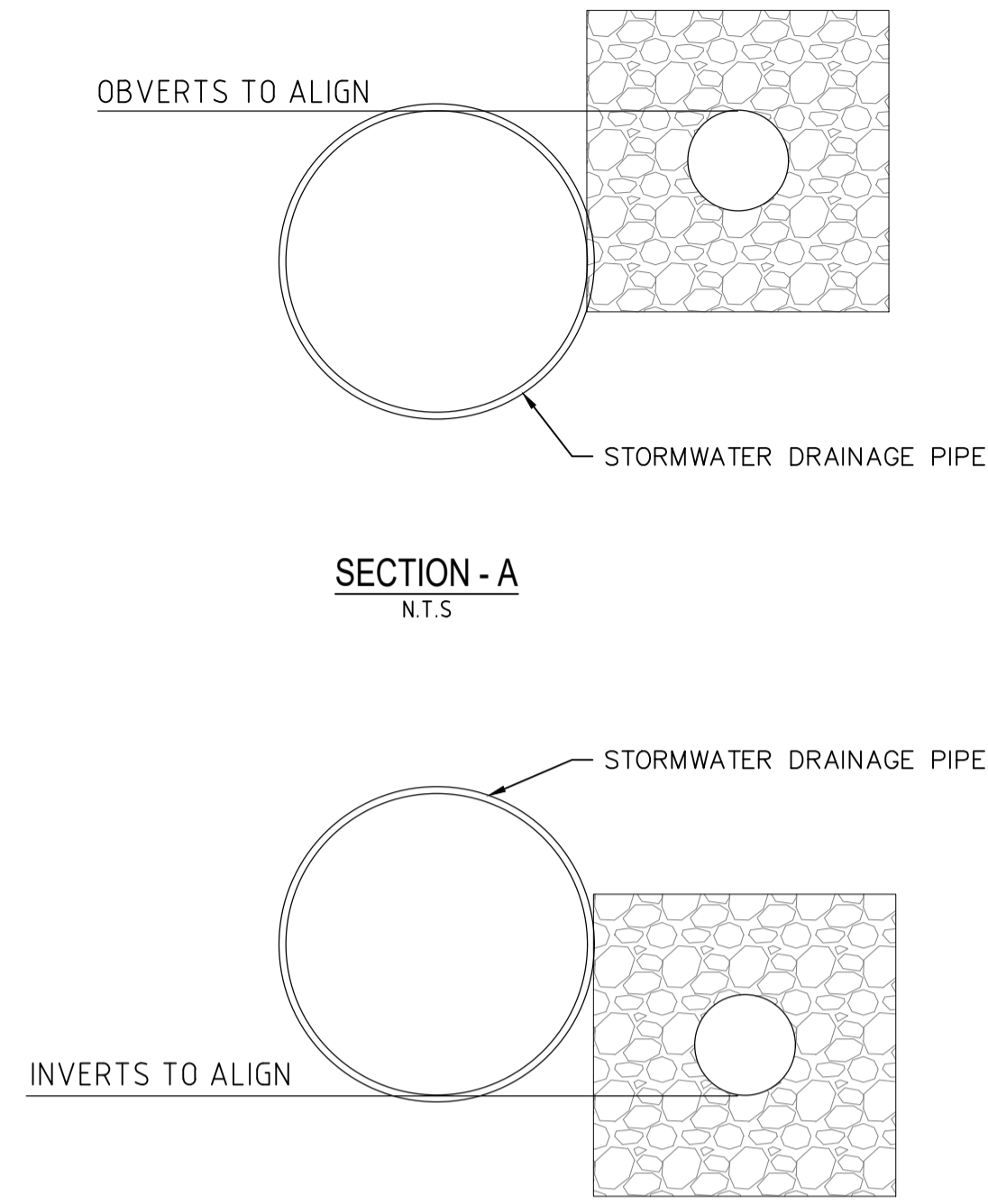
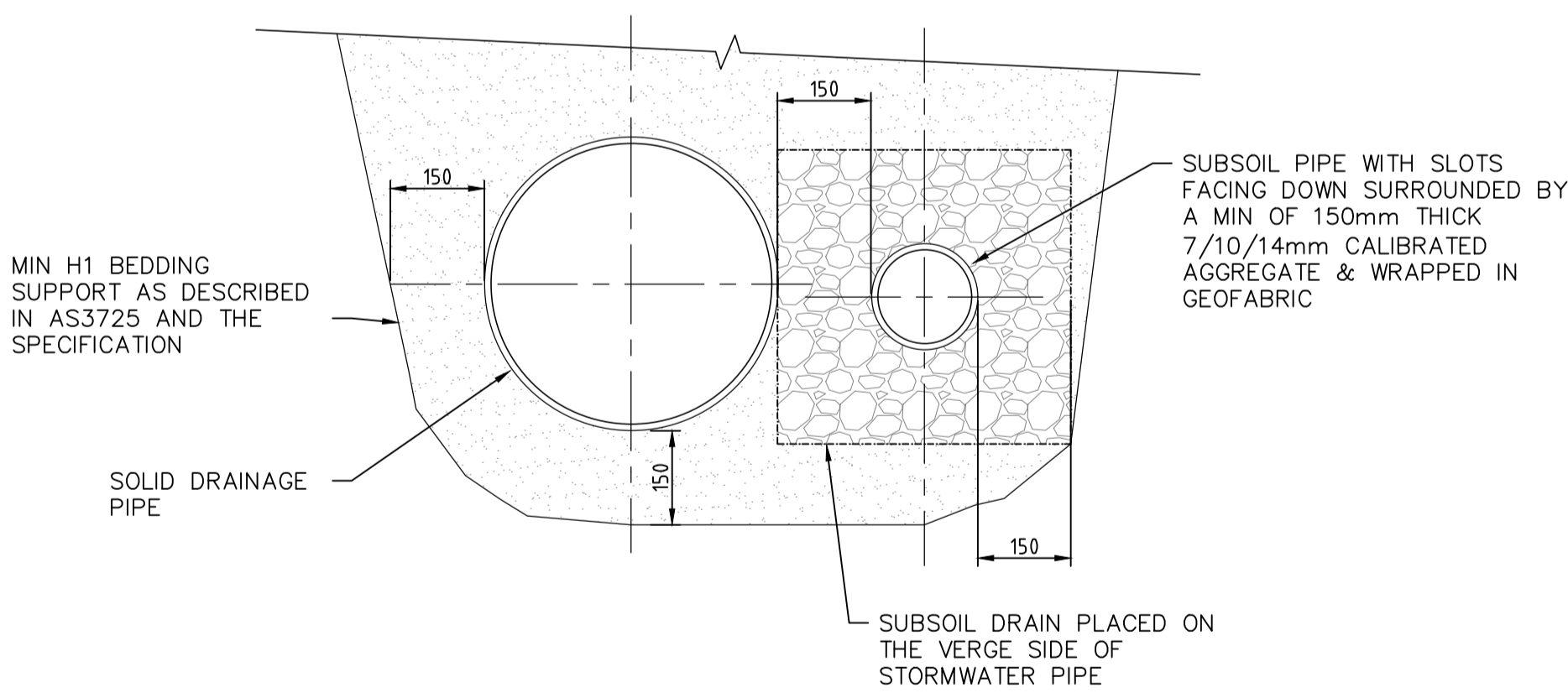


TRENCH TO BE ACCORDANCE WITH THE SPECIFICATION

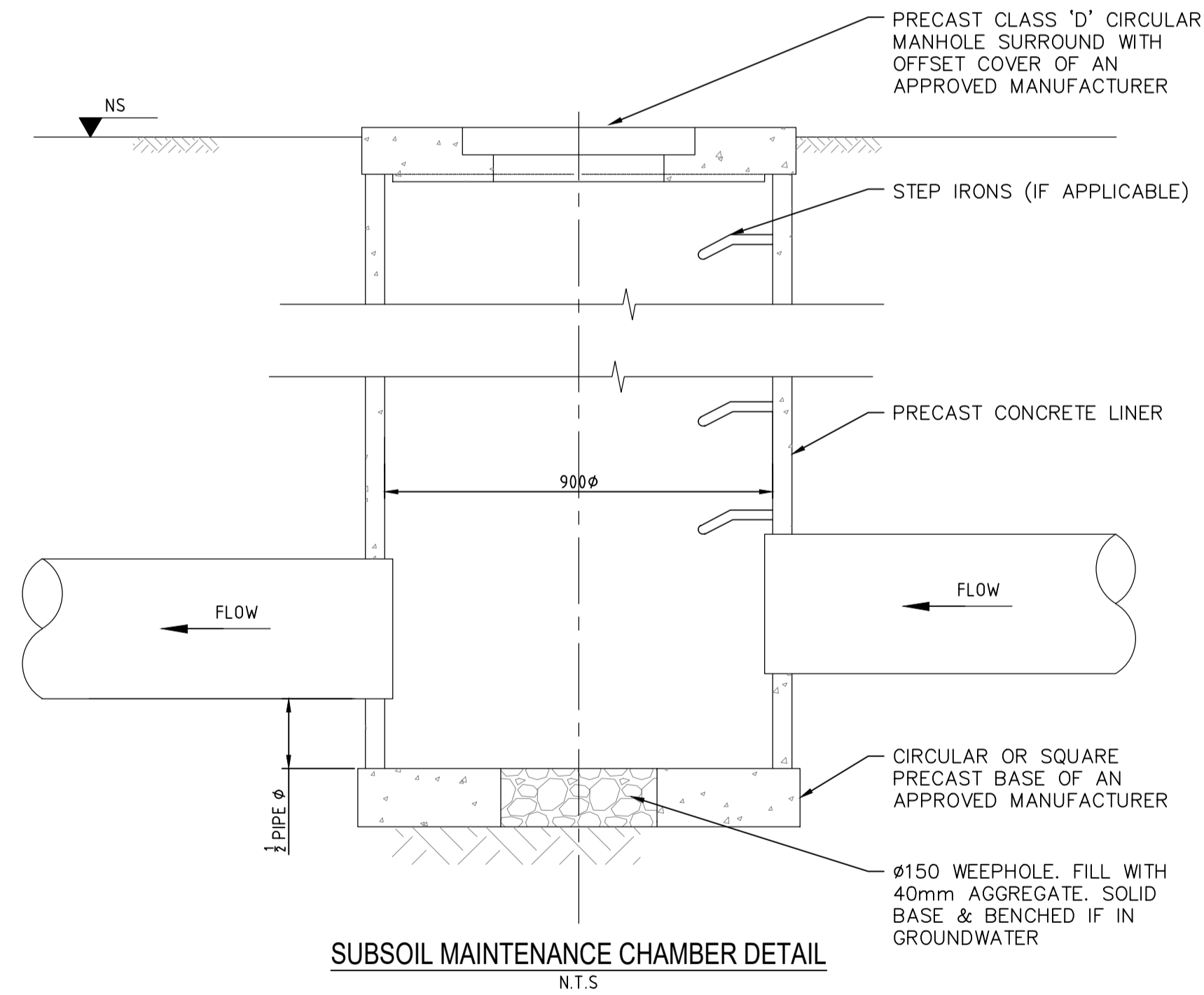
**SUBSOIL PIPE TRENCH DETAIL**  
N.T.S



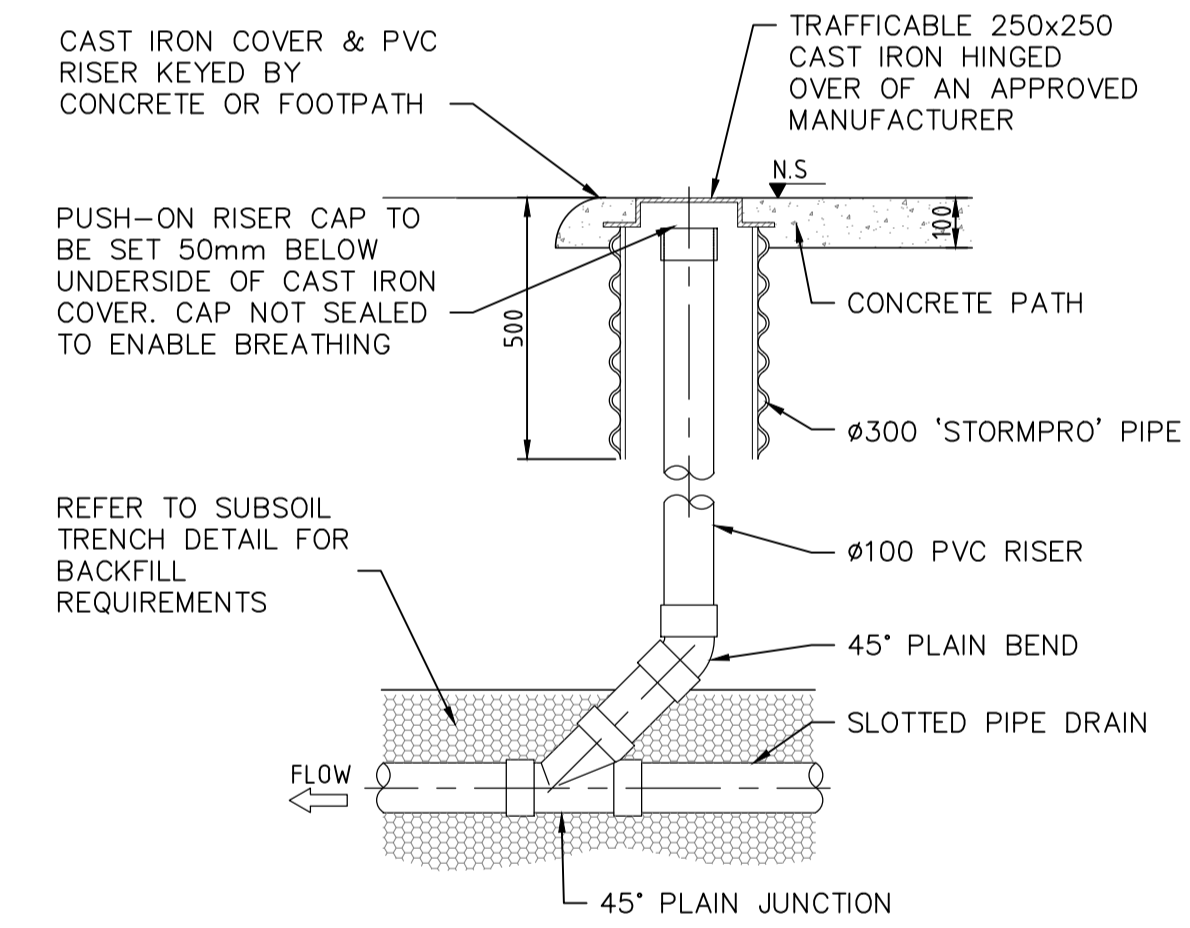
**TYPICAL ARRANGEMENT FOR COMMON TRENCH SUBSOIL PIPE**  
N.T.S



**TRENCH DETAIL (SOLID & SUBSOIL)**  
N.T.S



**SUBSOIL MAINTENANCE CHAMBER DETAIL**  
N.T.S



**SUBSOIL MAINTENANCE RISER DETAIL (SR)**  
N.T.S

**SUBSOIL DRAINAGE NOTES :**

1. MAINTENANCE RISER TO BE LOCATED AT 60m MAXIMUM SPACING AT EVERY CHANGE OF DIRECTION AND UPSTREAM EXTREMITIES.
2. MAINTENANCE CHAMBERS ARE TO BE USED EVERY 180m AND AT THE JUNCTION OF TWO OR MORE INLET PIPES AND THE CHANGE OF PIPE SIZES.
3. NON-SLOTTED SOLID PIPE TO BE USED DIRECTLY UNDER ROAD PAVEMENTS.
4. SUBSOIL IN COMMON TRENCH WITH DRAINAGE TO CONNECT INTO D/S AND U/S/ DRAINAGE PITS.
5. GEOTEXTILE TO BE NON-WOVEN FABRIC

Scale:	AS SHOWN
Date:	N/A
Revision:	By: BV, NS Approved: BV, NS



THIS DRAWING REMAINS THE PROPERTY OF THE SHIRE OF SERPENTINE JARRARDALE AND SHALL NOT BE RETAINED, COPIED, OR USED, WITHOUT WRITTEN APPROVAL FROM THE DIRECTOR ENGINEERING SERVICES

Drawn:	BC	Date:	30/11/23	Signed:	
Designed:	BV	Date:	30/11/23	Signed:	
Checked:	VB	Date:	30/11/23	Signed:	
Manager Engineering Services:					

SHIRE OF SERPENTINE JARRARDALE  
STANDARD DRAWINGS

DRAINAGE - SUBSOIL DRAINAGE

Sheet No:	1 OF 1
Revision No:	A
DWG No:	STD-D10