



Your ref :
Our ref : A10429895
Enquiries : Danielle Matthews
9326 3423

8 November 2023

Andrew Trosic
Director Development Services
Shire of Serpentine Jarrahdale
6 Paterson Street
MUNDIJONG WA 6123

Dear Andrew,

Request for In-Principle Support: Brickwood Reserve Environmental Offset, Byford Rail Extension

Thank you for providing the Public Transport Authority (PTA) with the opportunity to brief the Shire of Serpentine Jarrahdale (Shire) Executive Team on 3 October 2023 in relation to environmental offsets for the METRONET Byford Rail Extension (BRE) project.

Background

The BRE project will extend the electrified passenger rail network from Armadale Station to a new station at Byford. The project will deliver a new elevated station at Armadale, replacement of selected level crossings with grade separated crossings, a new rail bridge at Wungong Brook, and a new principal shared path.

The BRE project was approved by the WA Minister for the Environment on 1 February 2022 ([Ministerial Statement 1183](#)) and the Federal Minister for the Environment on 7 February 2022 ([EPBC 2020/8764](#)). Under the approval conditions, the PTA is required to prepare and implement an environmental offset strategy, offset management plans and a research plan that detail measures to counterbalance the project's environmental impacts.

Ministerial Statement 1183 stipulates that environmental offset measures are to be implemented at four locations, including Brickwood Reserve. The extent of environmental values within Brickwood Reserve requiring environmental offset measures to be implemented is as follows:

- 6.5 ha of threatened ecological community (TEC) Swan Coastal Plain type 3a (SCP 3a) '*Corymbia calophylla - Kingia australis woodlands on heavy soils community of the Swan Coastal Plain*'
- 4.2 ha of Conservation Category Wetland (CCW)

Brickwood Reserve Offset Allocation Area

The PTA has identified an 'Offset Allocation Area' of approximately 7.5 ha within Brickwood Reserve that contains sufficient extent of SCP 3a and CCW to achieve State and Federal requirements for the BRE project (refer to Figure 1 attached). As Brickwood Reserve contains approximately 34 ha of SCP 3a in total, there would be ample unallocated area remaining should the Shire require it for other environmental offsets in the future.

In consultation with the Shire's environmental team, the PTA has also identified an 'Offset Management Area' of approximately 12 ha, within which the Offset Allocation Area is situated (Figure 1). This larger area is based on available access and will provide for practical on-ground management of the Offset Allocation Area and its buffer.

The PTA proposes to provide funding to the Shire for the implementation of on-ground management within the 12 ha 'Offset Management Area' as part of the environmental offset package for the BRE project. On-ground management measures may include, but are not limited to, the installation of fencing and signage, formalisation of access, rehabilitation of degraded areas, rubbish removal, weed control, surveys and monitoring.

The PTA will prepare a Memorandum of Understanding (MoU) in consultation with the Shire, which will outline the obligations of each party, including in relation to financial management, on-ground management, governance and reporting. The PTA has established similar arrangements with the Department of Biodiversity Conservation and Attractions for other METRONET environmental offsets.

The PTA is seeking confirmation of the Shire's in-principle support to utilise a portion of Brickwood Reserve (Figure 1) as an environmental offset for the BRE project. Following receipt of confirmation, the PTA will commence consultation with the Shire's environmental team regarding proposed on-ground management measures, which will be included as an annexure to the MoU.

We thank the Shire for its interest in supporting the PTA in delivering the BRE project's environmental offset commitments and look forward to your response. Should you have any queries regarding this correspondence, please contact Danielle Matthews, Principal Environmental Planner (email: Danielle.Matthews@pta.wa.gov.au, phone: (08) 9326 3423).

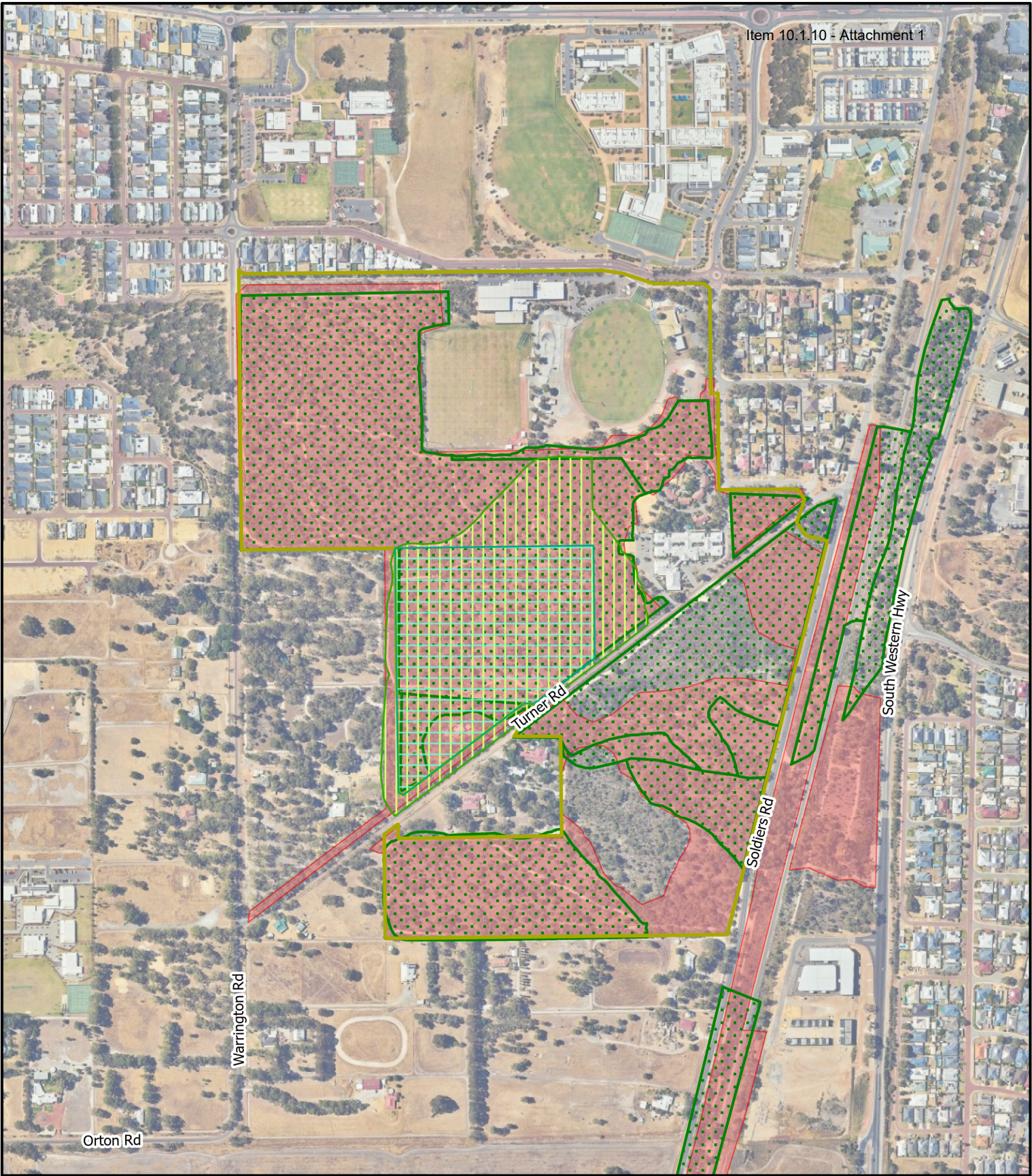
Yours sincerely,



Paul Monaghan

ENVIRONMENTAL MANAGER
PUBLIC TRANSPORT AUTHORITY




Att: Figure 1 - Brickwood Reserve Offset Boundaries



Brickwood Reserve Offset Management Area
 Figure 1 - Brickwood Reserve Offset Boundaries




LEGEND

-  Brickwood Reserve Site Boundary
-  Offset Management Area
-  Offset Allocation Area

Threatened Ecological Communities Restricted Swan Coastal Plain 3a (DBCA038)

-  Critically Endangered

Geomorphic Wetlands Swan Coastal Plain (DBCA019)

-  Conservation



Date Printed: 18/10/2023
 Requested by: M. Baelge
 Created by: D. Low
 Exported by: WE21592
 Approved by: M. Baelge
 File: PTA-GIS-LO-0035-0001
 Scale: 1:7,500 @ A4
 CRS: GDA2020 MGA Zone 50

