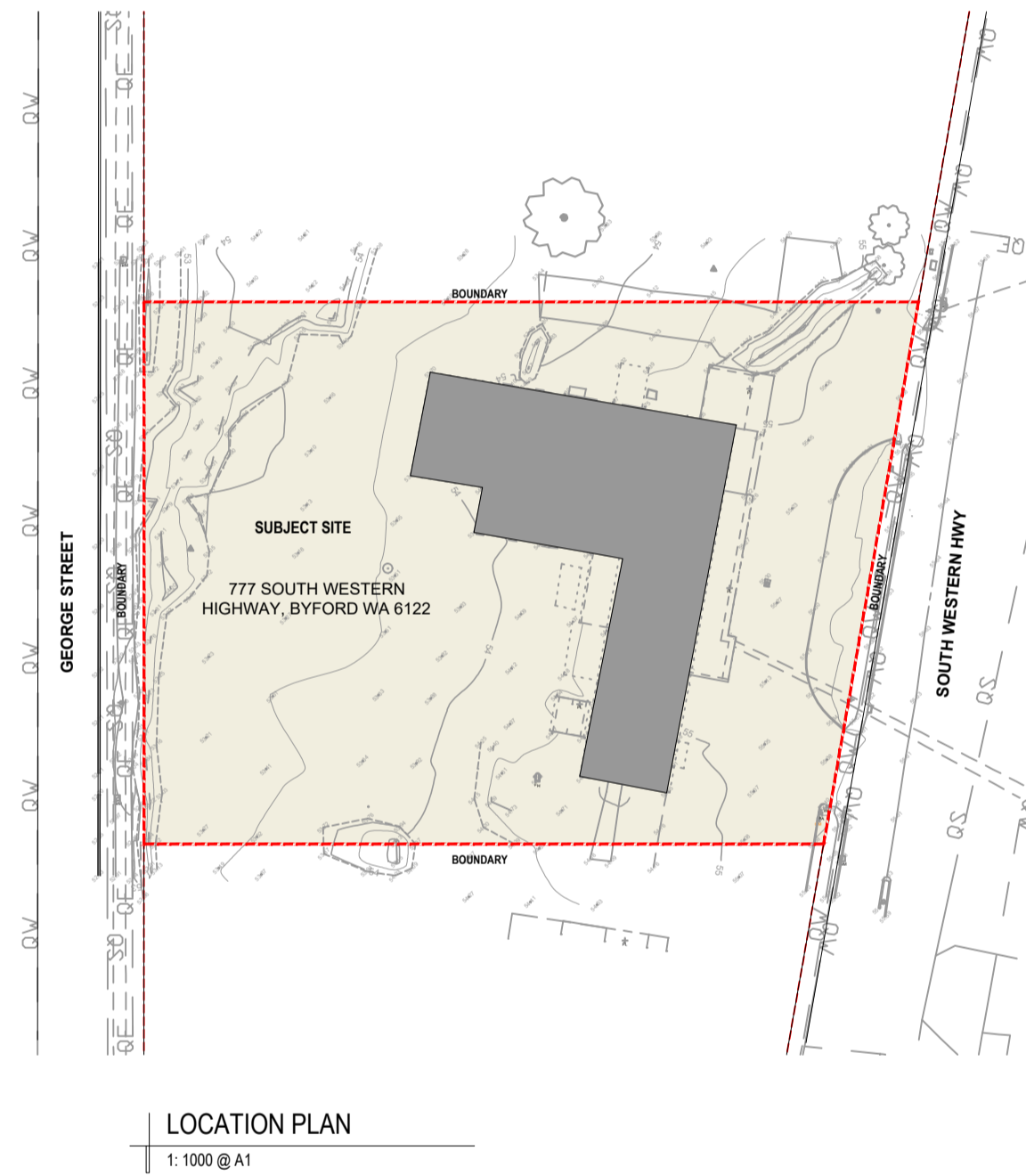


Revision	Amendment	Date
A	PLANNING	12.06.2024



## SELF STORAGE WAREHOUSE FACILITY 777 SOUTH WESTERN HIGHWAY, BYFORD WA 6122

### DRAWING SCHEDULE

- DA00 LOCATION PLAN & DRAWING SCHEDULE
- DA01 EXISTING / DEMOLITION PLAN
- DA02 PROPOSED SITE PLAN / GROUND FLOOR PLAN
- DA03 PROPOSED ROOF PLAN
- DA04 ELEVATIONS
- DA05 ELEVATIONS
- DA06 SECTIONS
- DA07 PERSPECTIVES



ON Architecture Pty Ltd ABN: 71 627 522 043  
242 Angus Street, SA 5000  
MARK NIELD  
0432 660 486  
m.nield@onarchitecture.com.au

**SELF STORAGE FACILITY**  
777 SOUTH WESTERN HIGHWAY  
BYFORD WA 6122

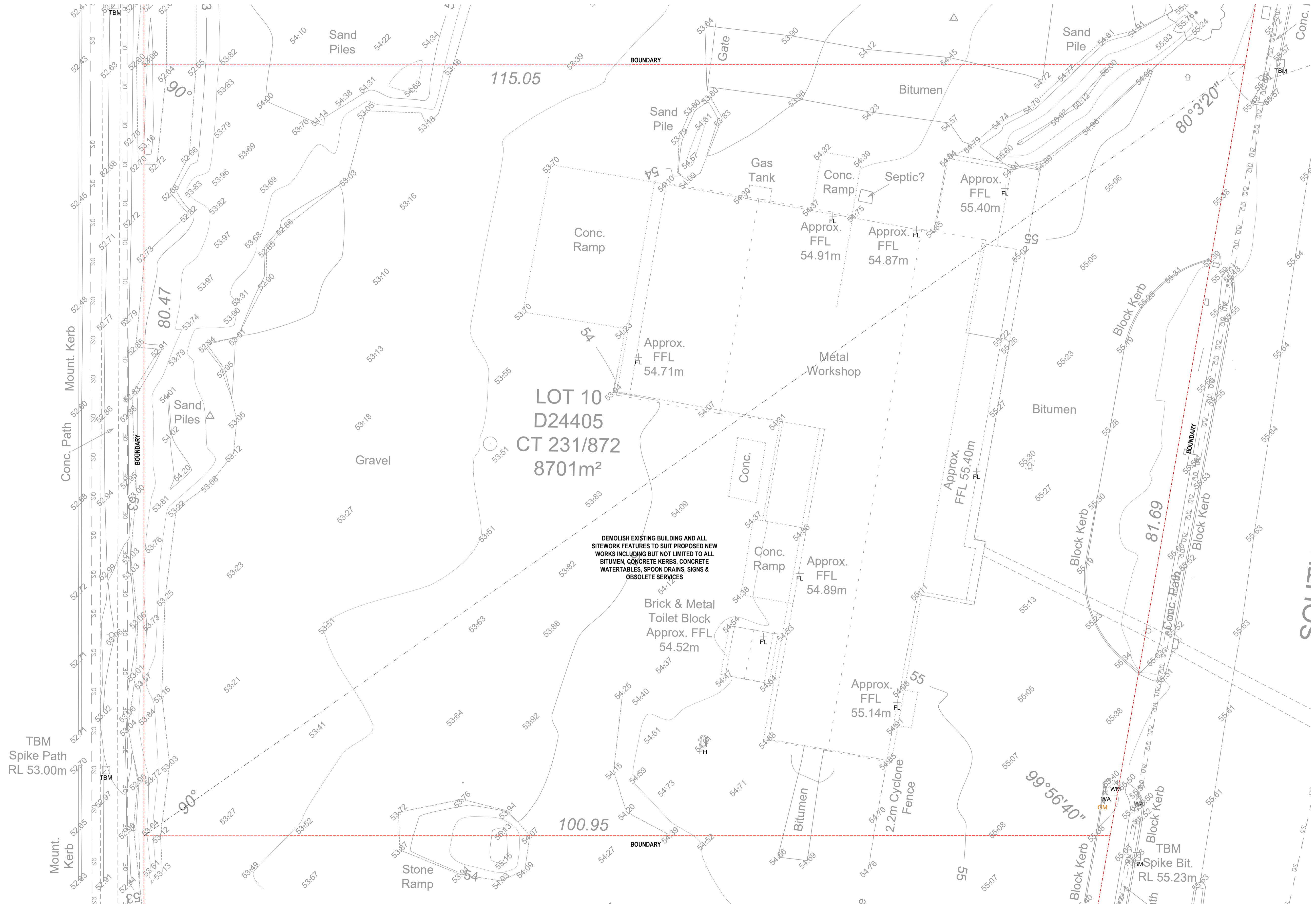
DATE: MAY 2024  
DRAWING: LOCATION PLAN & DRAWING SCHEDULE  
SCALE: 1:1000 @ A1

**DA00**

PROJECT NUMBER: 202400032  
DRAWN BY: S.G



Revision	Amendment	Date
A	PLANNING	12.06.2024



DEMOLISH EXISTING BUILDING AND ALL SITEWORK FEATURES TO SUIT PROPOSED NEW WORKS INCLUDING BUT NOT LIMITED TO ALL BITUMEN, CONCRETE KERBS, CONCRETE WATERTABLES, SPOON DRAINS, SIGNS & OBSOLETE SERVICES

SITE PLAN / GROUND FLOOR PLAN  
1:200 @ A1



ON Architecture Pty Ltd ABN: 71 627 522 043  
242 Angus Street, SA 5000  
MACK NIELD  
0432 660 486  
m.nield@onarchitecture.com.au

**SELF STORAGE FACILITY**  
777 SOUTH WESTERN HIGHWAY  
BYFORD WA 6122

DATE: JUNE 2024  
DRAWING: EXISTING / DEMOLITION PLAN  
SCALE: 1:200 @ A1

**DA01**

PROJECT NUMBER: 202400032  
DRAWN BY: S.G.



104  
 1.163ha

**FENCE TYPE LEGEND**

	FENCE TYPE 01 2.1m HIGH TUBULAR FENCE COLOUR: WOODLAND GREY
	FENCE TYPE 02 1.5m HIGH TUBULAR FENCE COLOUR: WOODLAND GREY

**REQUIREMENT SUMMARY**

GROUND FLOOR AREA EXHAUST	AREA	UNIT
NET AREA	884 m <sup>2</sup>	42%
NET FLOOR AREA	884 m <sup>2</sup>	42%
NET INTERNAL FLOOR AREA	884 m <sup>2</sup>	42%
NET EXTERNAL FLOOR AREA	884 m <sup>2</sup>	42%
NET TOTAL FLOOR AREA	884 m <sup>2</sup>	42%
NO. OF UNITS	375	100%
NO. OF SHED UNITS	375	100%
% OF SHED UNITS	100%	100%
% OF WALK UP UNITS	0%	0%
CARPARKING COVER LENGTH	100 m APPROX.	
UNITS EXCLUDED FROM AREA CALCULATED	0	
NET TOTAL FLOOR AREA (LANDSCAPING)	884 m <sup>2</sup>	42%

**TOTAL GP: BYFORD**

STORAGE UNIT MIX

DRIVE UP & WALK UP UNITS	SIZE	No. OF UNITS	TOTAL AREA	CUBIC AREA	ACTUAL RATIO
	2 x 2	57	228 m <sup>2</sup>	547.2 m <sup>3</sup>	15.20%
	2.5 x 3	6	72 m <sup>2</sup>	72 m <sup>3</sup>	1.60%
	2.5 x 3	17	127.5 m <sup>2</sup>	306 m <sup>3</sup>	4.33%
	3 x 2	62	372 m <sup>2</sup>	892.8 m <sup>3</sup>	16.53%
	3 x 3	57	513 m <sup>2</sup>	1231.2 m <sup>3</sup>	15.20%
	4 x 3	36	360 m <sup>2</sup>	864 m <sup>3</sup>	8.80%
	4.5 x 3	42	567 m <sup>2</sup>	1360.5 m <sup>3</sup>	11.20%
	5 x 3	20	300 m <sup>2</sup>	720 m <sup>3</sup>	5.33%
	5.5 x 3	32	363 m <sup>2</sup>	871.2 m <sup>3</sup>	5.87%
	6 x 3	25	450 m <sup>2</sup>	1080 m <sup>3</sup>	6.67%
	7 x 3	24	504 m <sup>2</sup>	1209.6 m <sup>3</sup>	6.40%
	7.5 x 3	12	270 m <sup>2</sup>	648 m <sup>3</sup>	3.20%
	5.5 m <sup>2</sup>	1	5.5 m <sup>2</sup>	13.2 m <sup>3</sup>	0.27%
<b>TOTAL No. OF STORAGE UNITS</b>					<b>375</b>
<b>AVERAGE UNIT SIZE (m<sup>2</sup>)</b>					<b>10.9</b>



SITE PLAN / GROUND FLOOR PLAN  
 1:200 @ A1

11  
 7901m<sup>2</sup>



ON Architecture Pty Ltd ABN: 71 627 522 043  
 242 Angus Street, SA 5000  
 MASK NIELD  
 0432 660 486  
 m.nield@onarchitecture.com.au

**SELF STORAGE FACILITY**  
 777 SOUTH WESTERN HIGHWAY  
 BYFORD WA 6122

DATE: JUNE 2024  
 DRAWING: SITE PLAN / GROUND FLOOR PLAN  
 SCALE: 1:200 @ A1

**DA02**

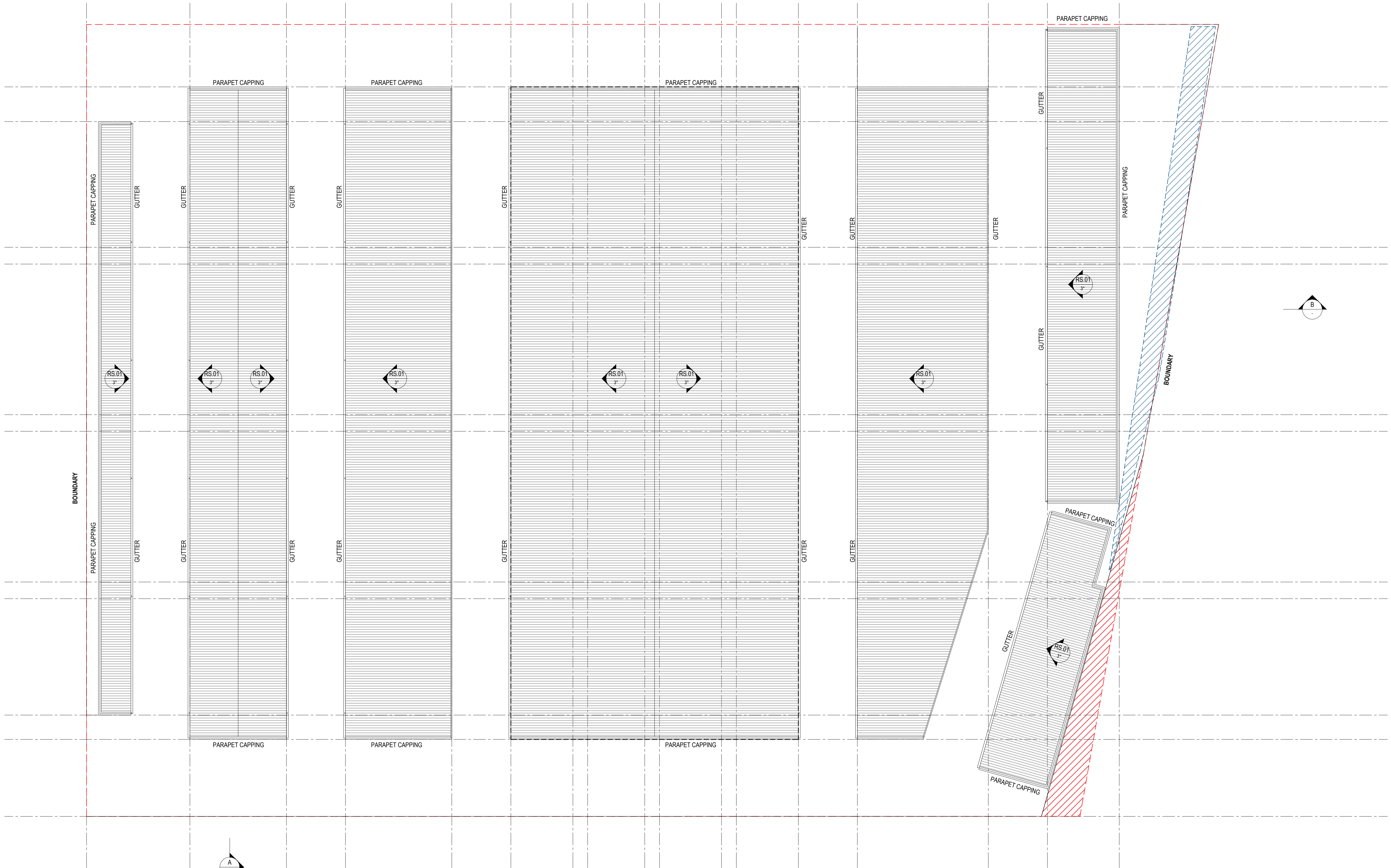
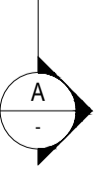
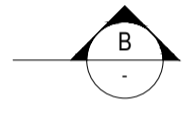
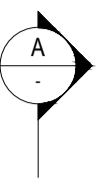
PROJECT NUMBER: 202400032  
 DRAWN BY: S.G.  
 Ordinary Council Meeting - 15 July 2024



Revision	Amendment	Date
A	PLANNING	12.06.2024

LEGEND

RS.01 ROOF SHEETING  
KINGKLIP 700 (OR SIMILAR PROFILE),  
GALVANIZED FINISH



ROOF PLAN  
1:200 @ A1



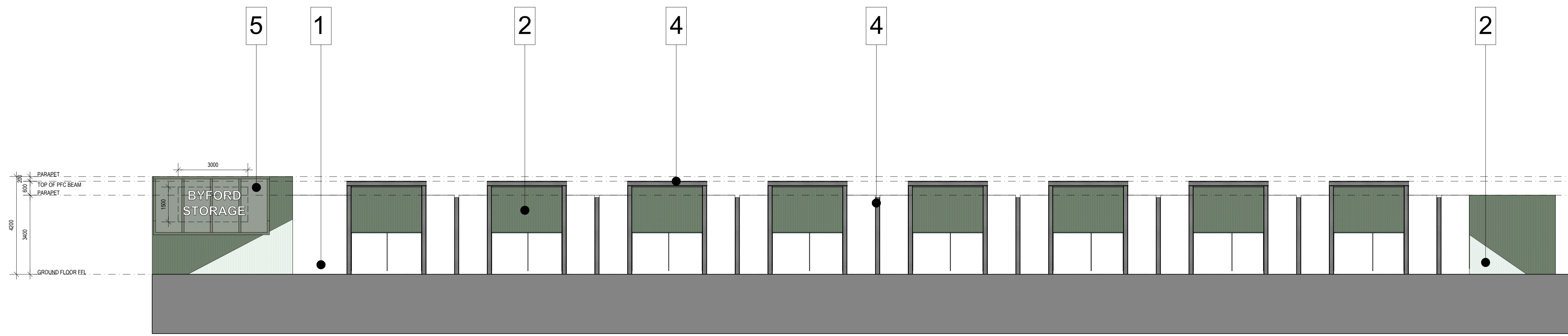
ON Architecture Pty Ltd ABN: 71 627 522 043  
242 Angus Street, SA 5000  
MARK WIELD  
0432 660 486  
m.wield@onarchitecture.com.au

SELF STORAGE FACILITY  
777 SOUTH WESTERN HIGHWAY  
BYFORD WA 6122

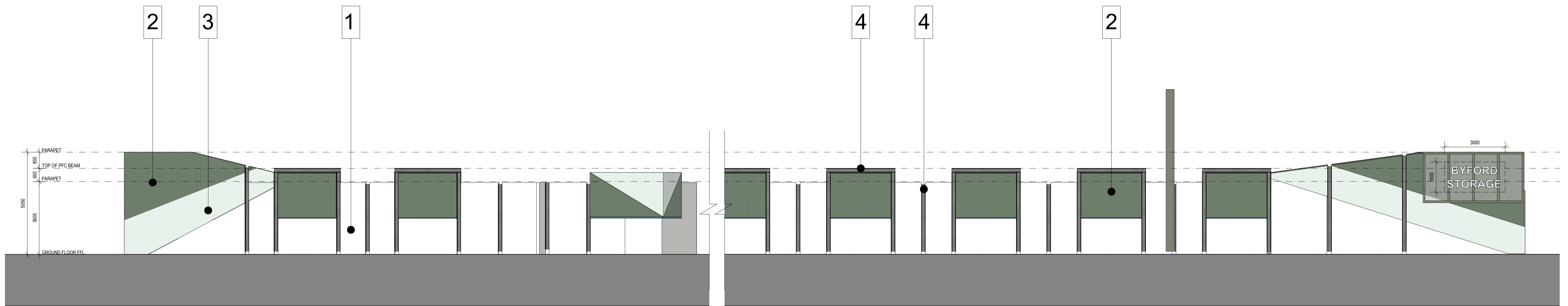
DATE: JUNE 2024  
DRAWING: ROOF PLAN  
SCALE: 1:200 @ A1

DA03

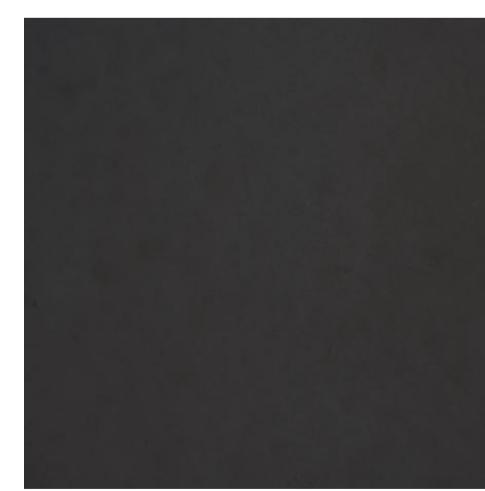
PROJECT NUMBER: 202400032  
DRAWN BY: S.G



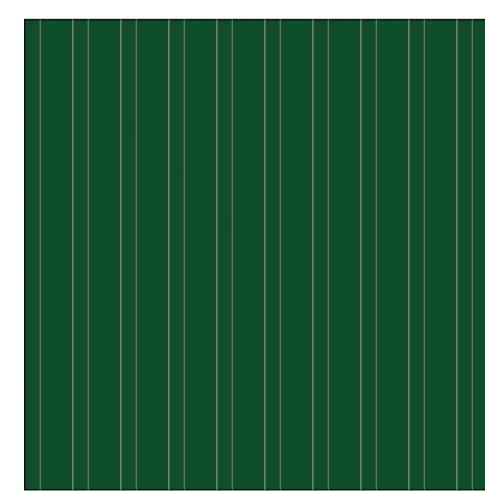
WESTERN ELEVATION  
 1:100 @ A1



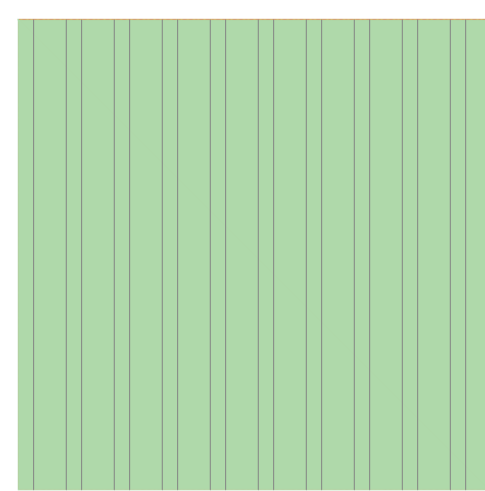
EASTERN ELEVATION  
 1:100 @ A1



1 OFF-FORM PAINTED PRECAST CONCRETE PANELS COLOUR: T.B.C



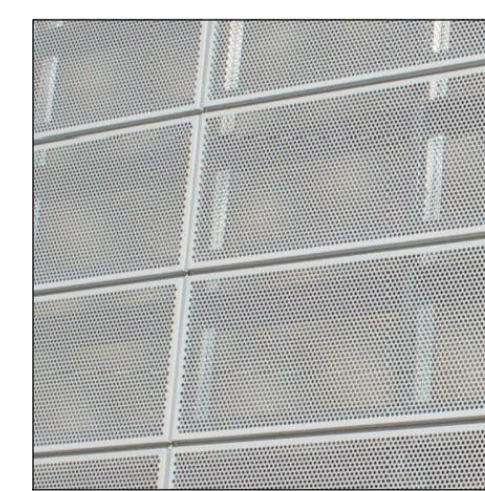
2 CORRUGATED CLADDING COLOUR: FOREST GREEN T.B.C



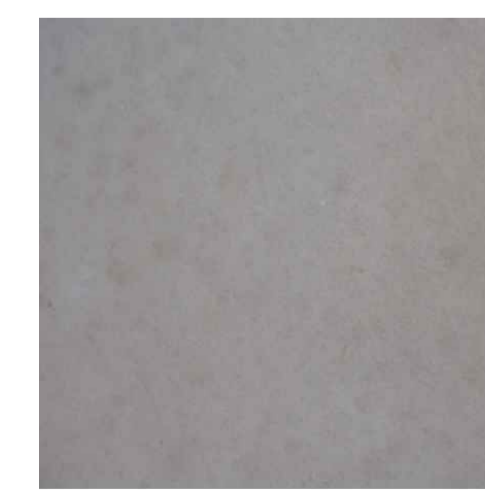
3 CORRUGATED CLADDING COLOUR: PALE EUCALYPT T.B.C



4 POWDERCOATED PFC BEAM COLOUR: MONUMENT

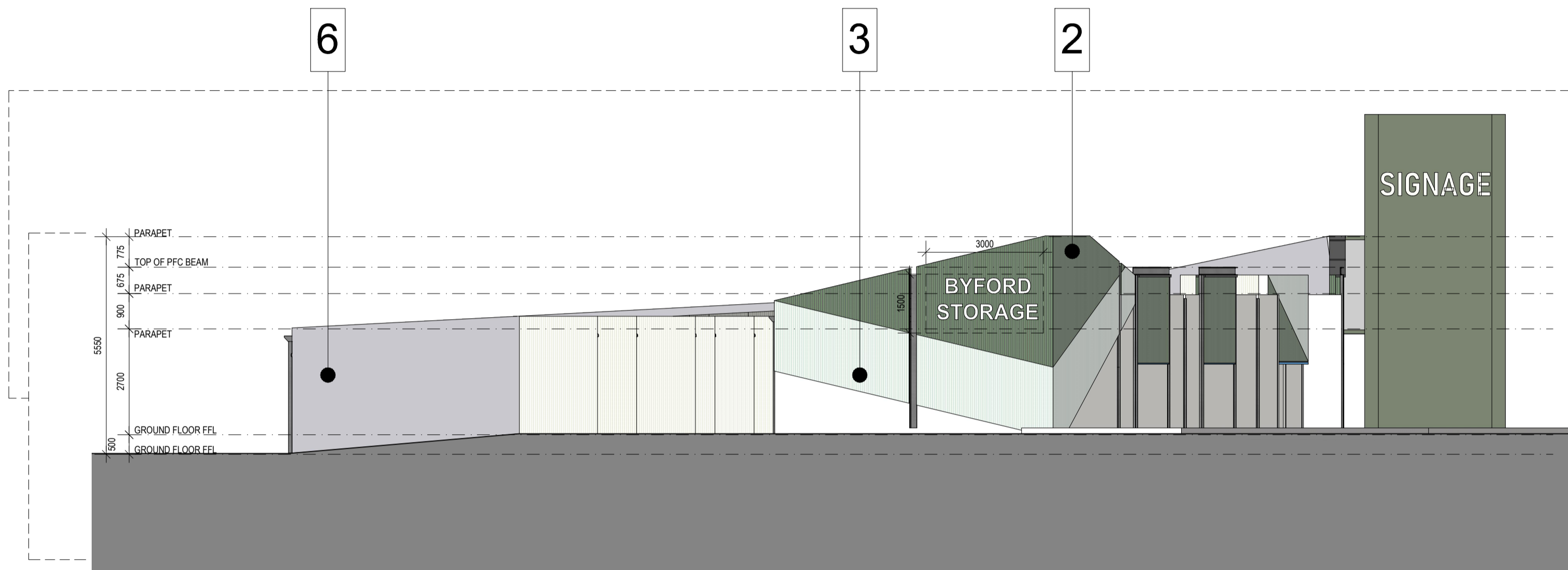
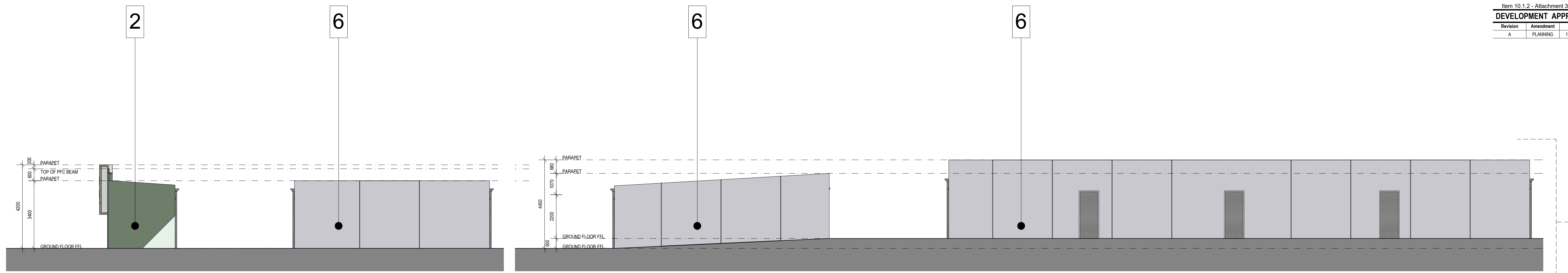


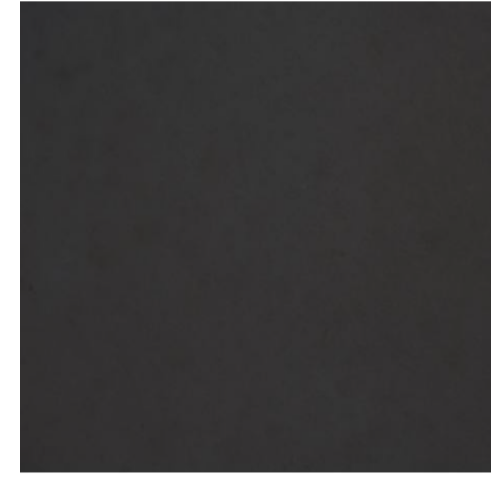
5 PERFORATED MESH

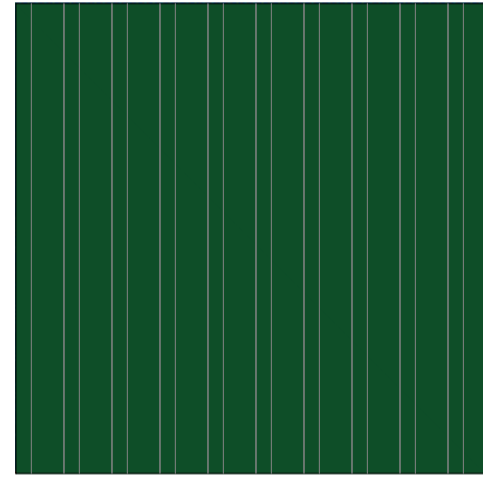


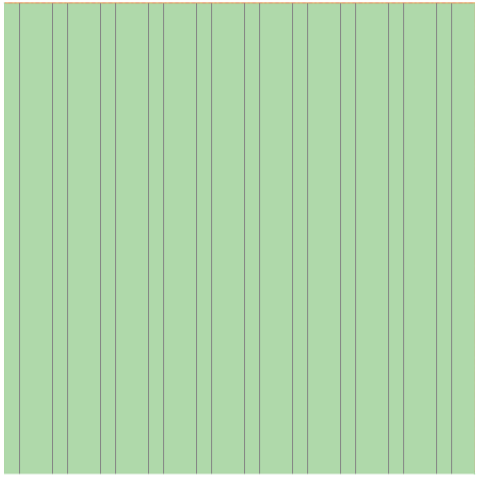
6 PORTLAND PRECAST CONCRETE PANELS








- 

**1** OFF-FORM PAINTED PRECAST CONCRETE PANELS  
COLOUR: T.B.C
- 

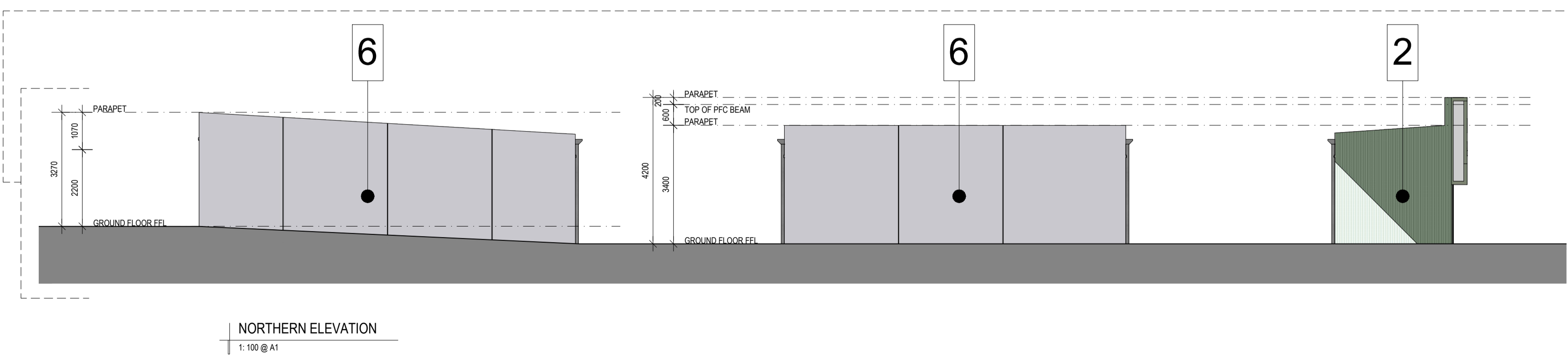
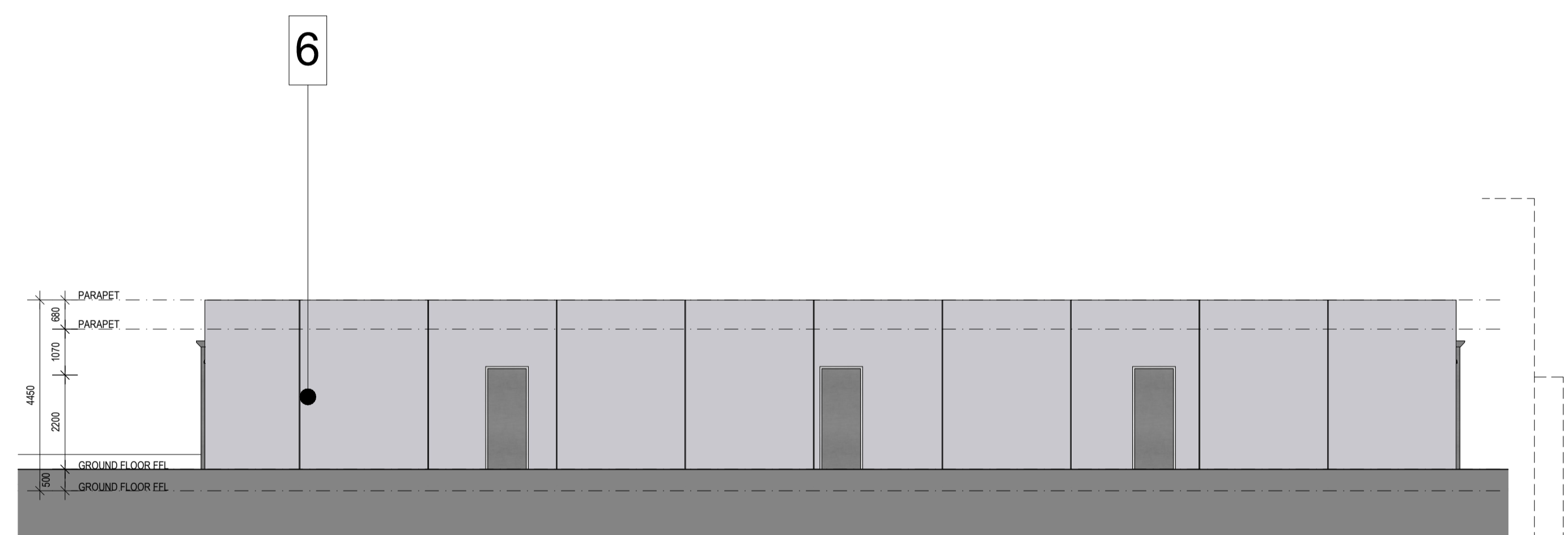
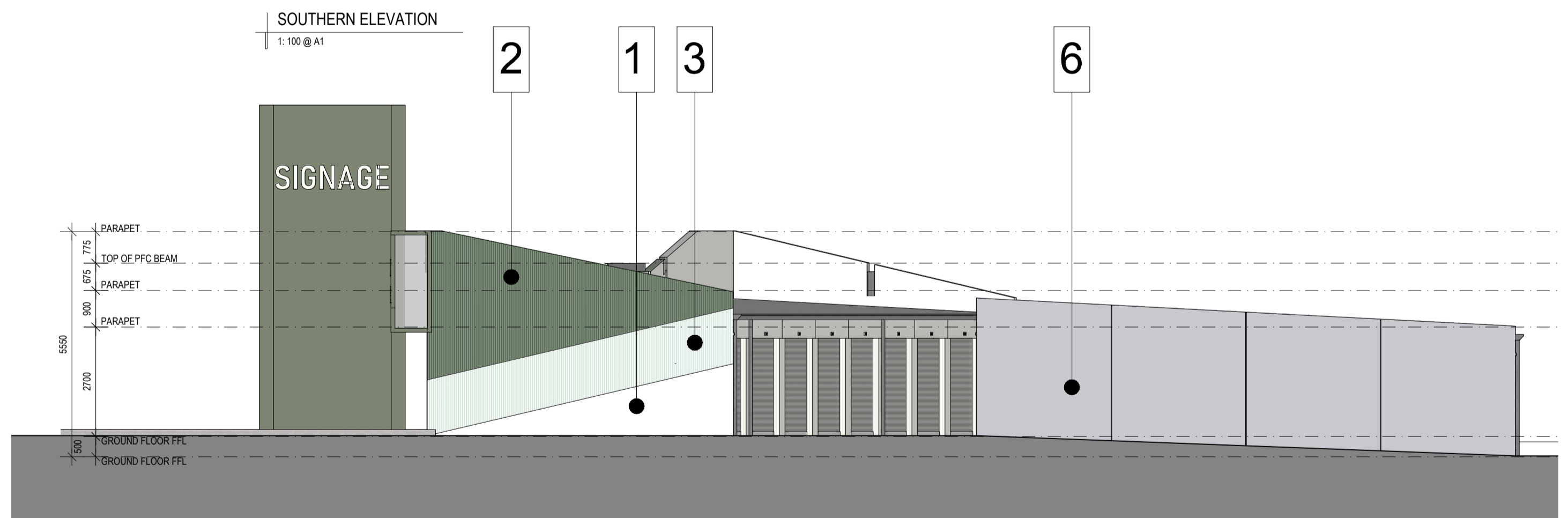
**2** CORRUGATED CLADDING  
COLOUR: FOREST GREEN T.B.C
- 

**3** CORRUGATED CLADDING  
COLOUR: PALE EUCALYPT T.B.C
- 

**4** POWDERCOATED PFC BEAM  
COLOUR: MONUMENT
- 

**5** PERFORATED MESH
- 

**6** PORTLAND PRECAST CONCRETE PANELS



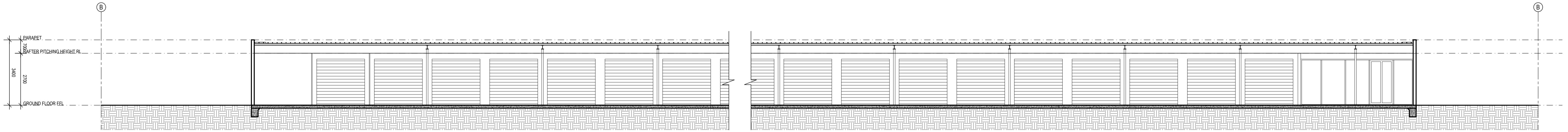
**SELF STORAGE FACILITY**  
 777 SOUTH WESTERN HIGHWAY  
 BYFORD WA 6122

DATE: JUNE 2024  
 DRAWING: ELEVATIONS  
 SCALE: 1:100 @ A1

**DA05**

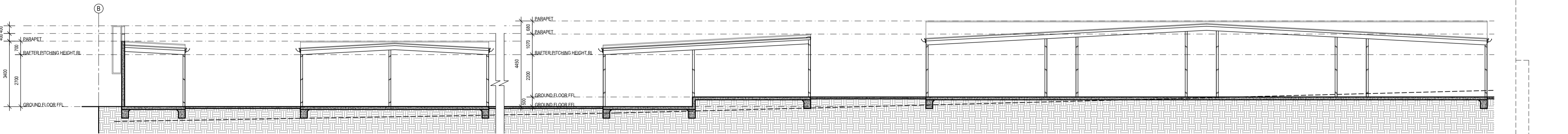
PROJECT NUMBER: 202400032  
 DRAWN BY: S.G

Revision	Amendment	Date
A	PLANNING	12.06.2024



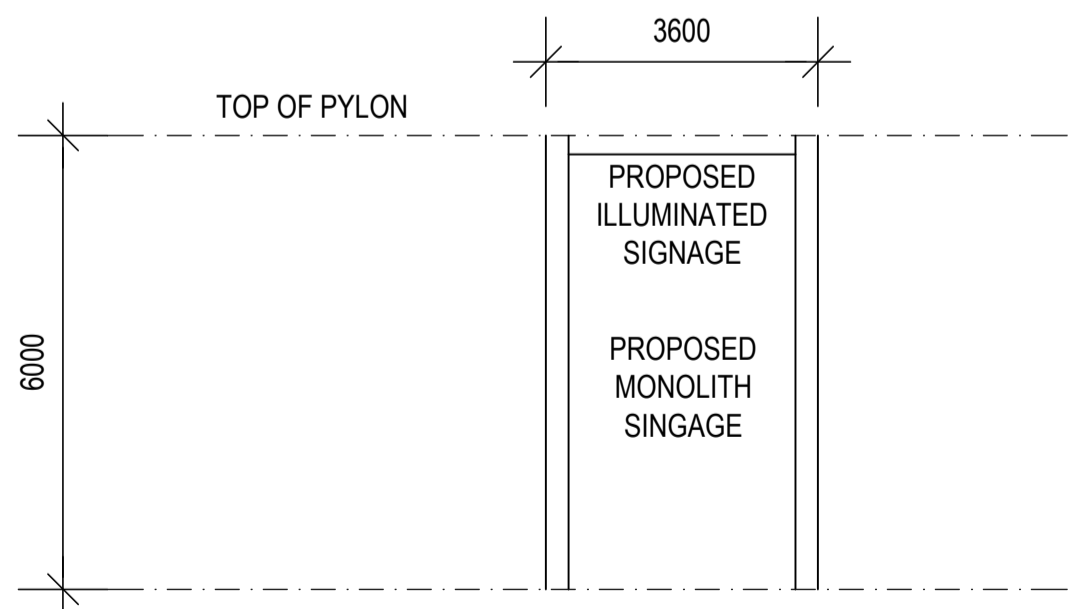
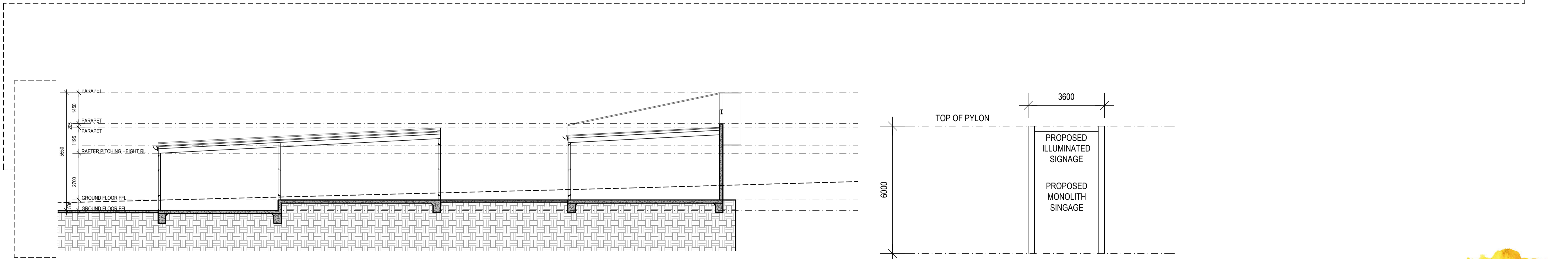
SECTION A

1:100 @ A1



SECTION B

1:100 @ A1



PROPOSED SIGNAGE PYLON

1:100 @ A1



ON Architecture Pty Ltd ABN: 71 627 522 043  
 242 Argus Street, SA 5000  
 MARK WIELD  
 0432 660 486  
 m.wield@onarchitecture.com.au

**SELF STORAGE FACILITY**  
 777 SOUTH WESTERN HIGHWAY  
 BYFORD WA 6122

DATE: JUNE 2024  
 DRAWING: SECTIONS  
 SCALE: 1:100 @ A1

**DA06**

PROJECT NUMBER: 202400032  
 DRAWN BY: S.G.



Revision	Amendment	Date
A	PLANNING	12.06.2024



ON Architecture Pty Ltd ABN: 71 627 522 043  
 242 Angas Street, SA 5000  
 MARK NIELD  
 0432 660 486  
 m.nield@onarchitecture.com.au

**SELF STORAGE FACILITY**  
 777 SOUTH WESTERN HIGHWAY  
 BYFORD WA 6122

DATE: JUNE 2024  
 DRAWING: PERSPECTIVES  
 SCALE: -

**DA07**

PROJECT NUMBER: 202400032  
 DRAWN BY: S.G