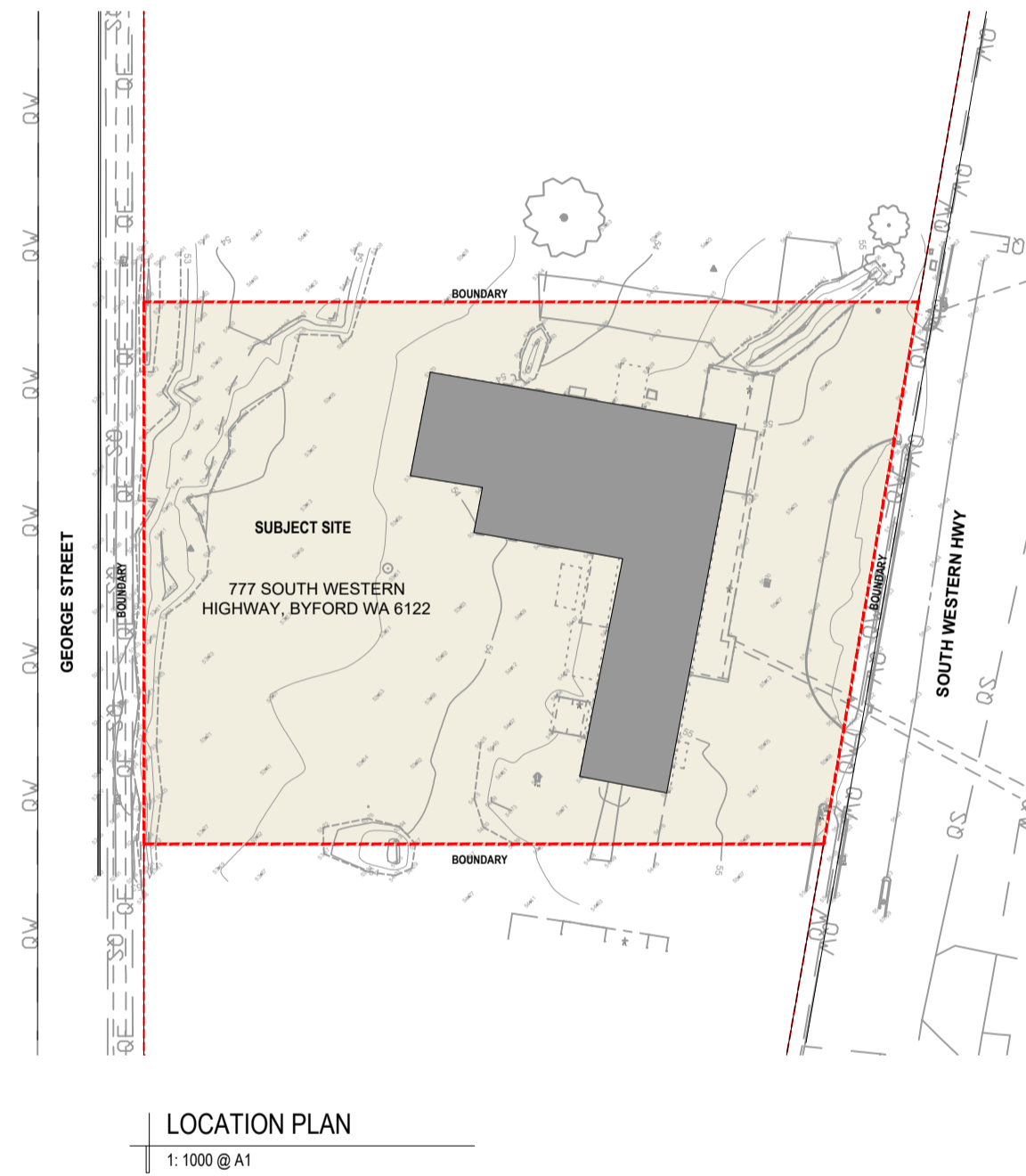


Revision	Amendment	Date
A	PLANNING	07.03.2024
B	PLANNING	08.05.2024



SELF STORAGE WAREHOUSE FACILITY 777 SOUTH WESTERN HIGHWAY, BYFORD WA 6122

DRAWING SCHEDULE

DA00	LOCATION PLAN & DRAWING SCHEDULE	DA06	PROPOSED ROOF PLAN
DA01	EXISTING / DEMOLITION PLAN	DA07	ELEVATIONS
DA02	PROPOSED SITE PLAN	DA08	ELEVATIONS
DA02.1	PROPOSED SITE PLAN - INTERIM ACCESS	DA09	SECTIONS
DA03	PROPOSED GROUND FLOOR	DA10	PERSPECTIVES
DA04	PROPOSED FIRST FLOOR PLAN		
DA05	PROPOSED SECOND FLOOR PLAN		



ON Architecture Pty Ltd ABN: 71 627 522 043
242 Angus Street, SA 5000
MARK NIELD
0432 660 486
m.nield@onarchitecture.com.au

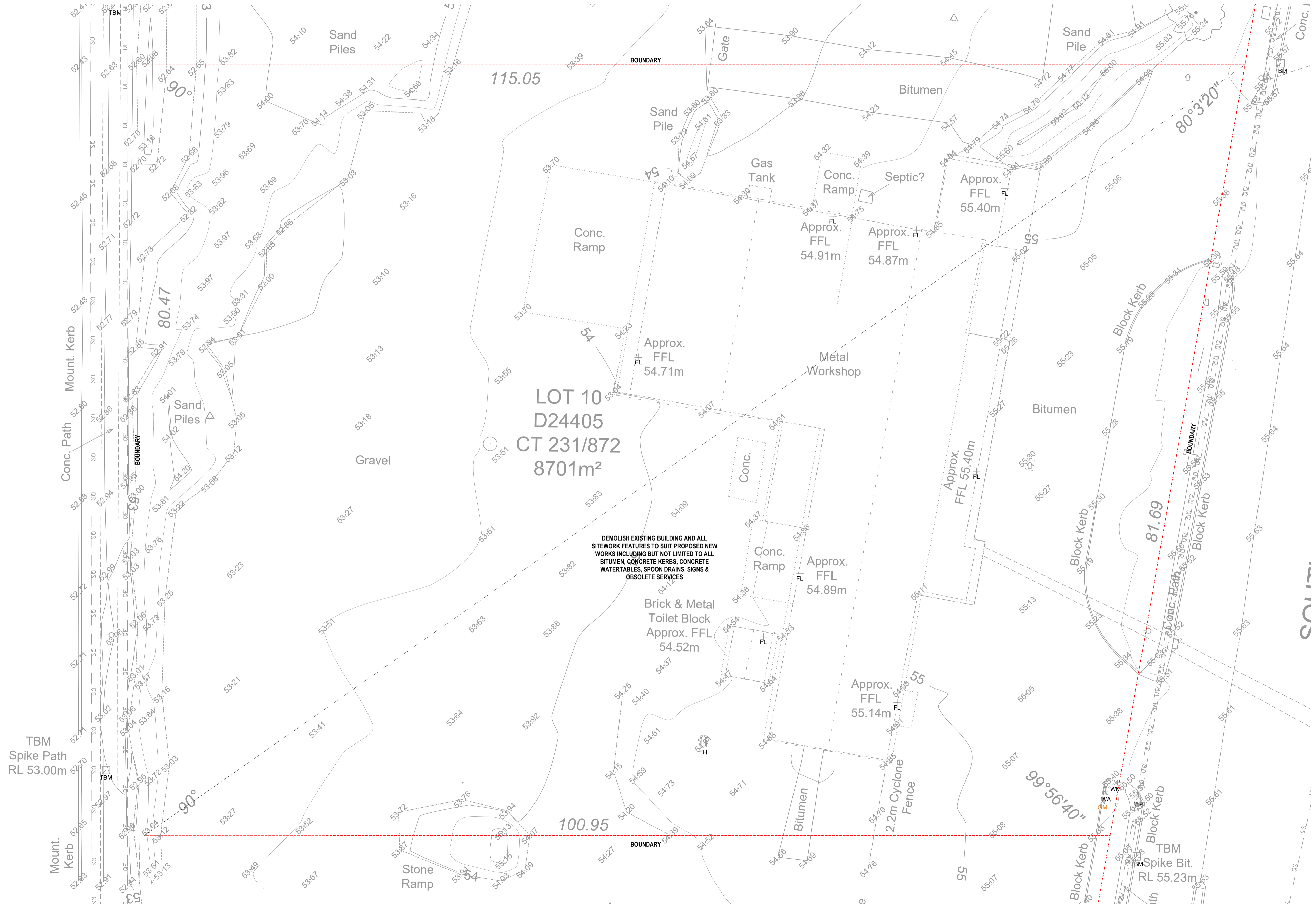
SELF STORAGE FACILITY
777 SOUTH WESTERN HIGHWAY
BYFORD WA 6122

DATE: MAY 2024
DRAWING: LOCATION PLAN & DRAWING SCHEDULE
SCALE: 1:1000 @ A1

DA00

PROJECT NUMBER: 202400032
DRAWN BY: S.G

Revision	Amendment	Date
A	PLANNING	07.03.2024



SITE PLAN / GROUND FLOOR PLAN
1:200 @ A1



ON Architecture Pty Ltd ABN: 71 627 522 043
 242 Angus Street, SA 5000
 MACK NIELD
 0432 660 486
 m.nield@onarchitecture.com.au

SELF STORAGE FACILITY
 777 SOUTH WESTERN HIGHWAY
 BYFORD WA 6122

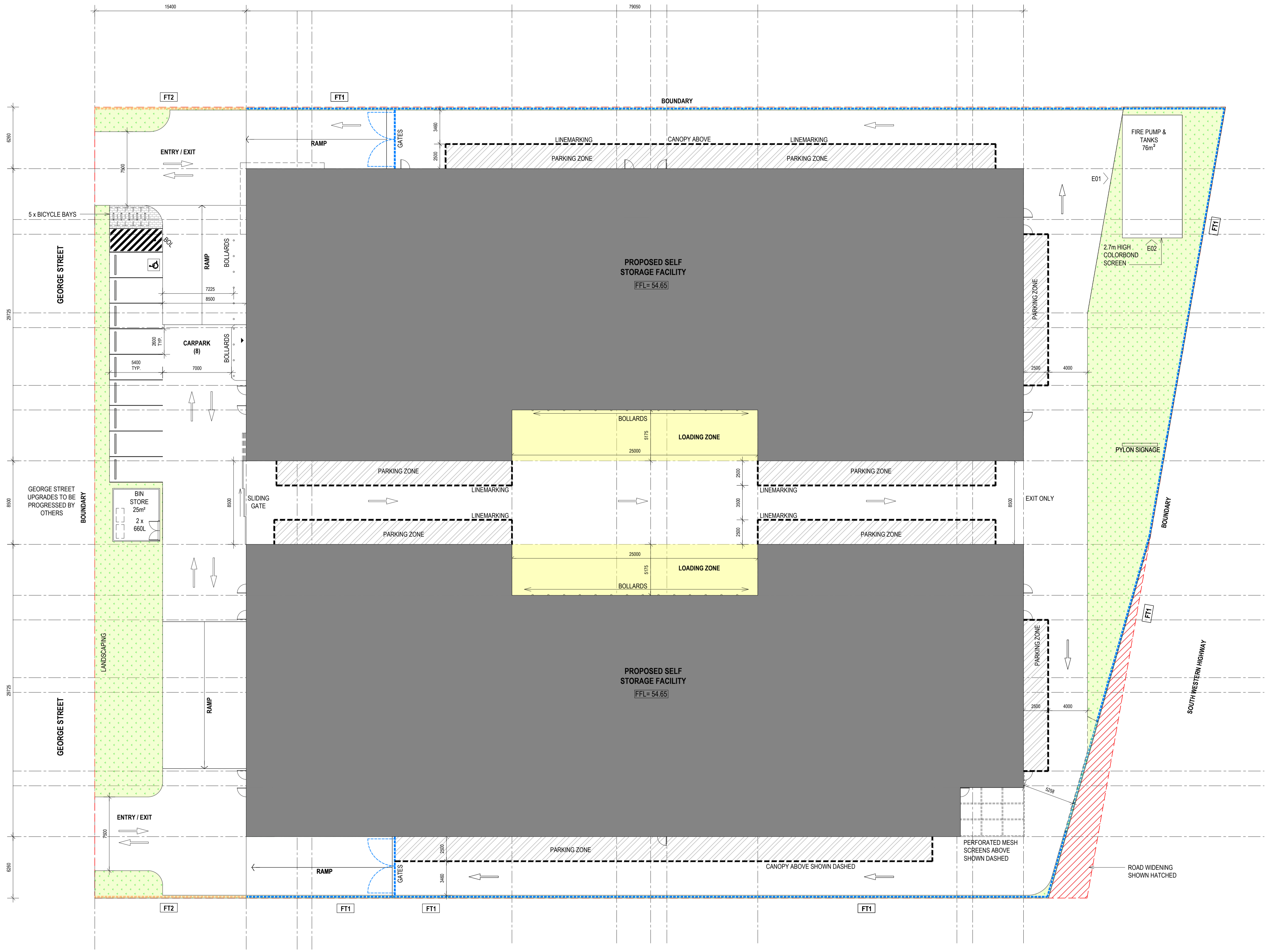
DATE: MARCH 2024
 DRAWING: EXISTING / DEMOLITION PLAN
 SCALE: 1:200 @ A1

DA01

PROJECT NUMBER: 202400032
 DRAWN BY: S.G.

FENCE TYPE LEGEND

FT1	FENCE TYPE 01 2.1m HIGH TUBULAR FENCE COLOUR: WOODLAND GREY
FT2	FENCE TYPE 02 1.5m HIGH TUBULAR FENCE COLOUR: WOODLAND GREY



SITE PLAN
 1:200 @ A1

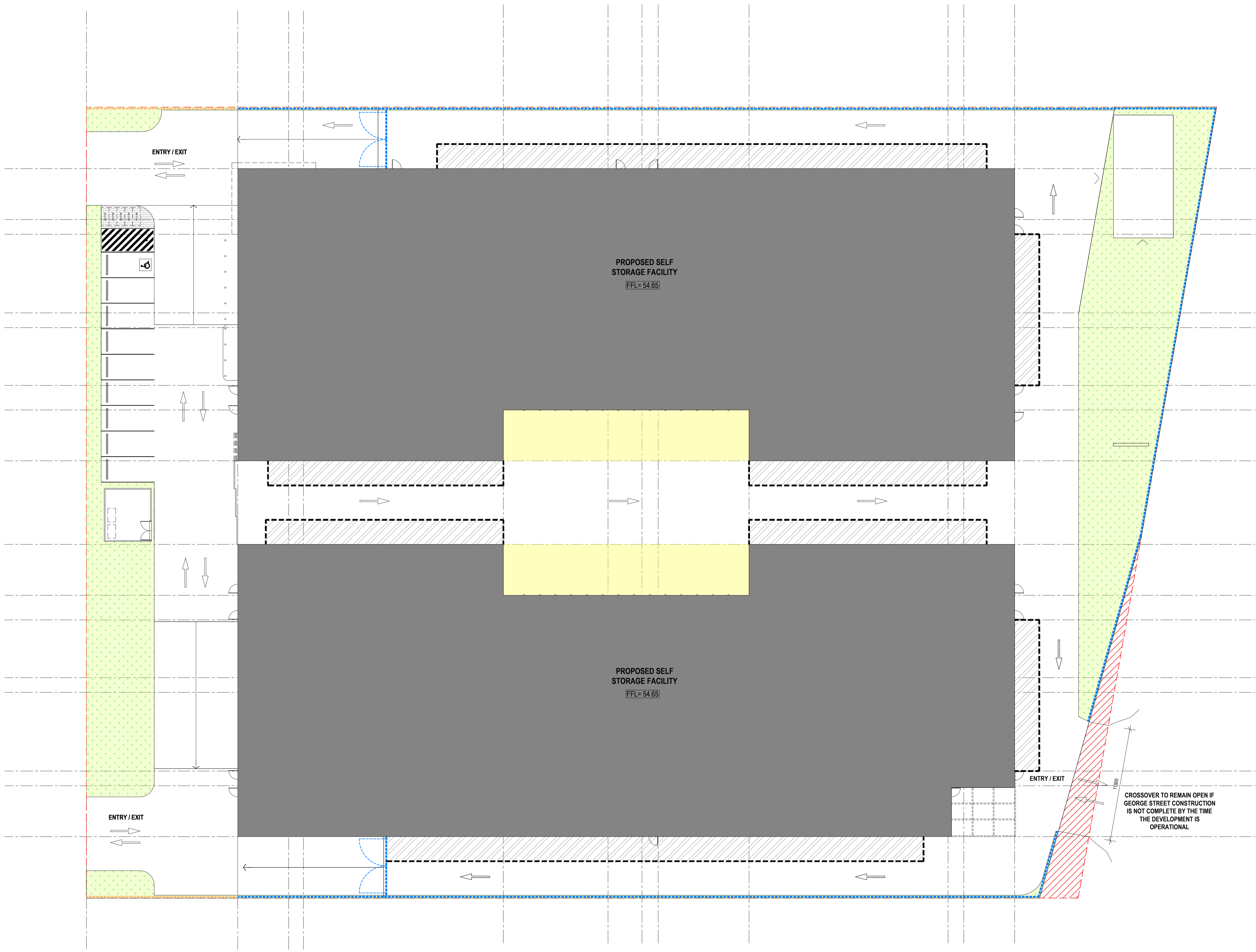


SELF STORAGE FACILITY
 777 SOUTH WESTERN HIGHWAY
 BYFORD WA 6122

DATE: MAY 2024
 DRAWING: SITE PLAN
 SCALE: 1:200 @ A1

DA02

PROJECT NUMBER: 202400032
 DRAWN BY: S.G.
 Ordinary Council Meeting - 15 July 2024



SITE PLAN - INTERIM ACCESS
 1:200 @ A1

DEVELOPMENT APPROVAL

Revision	Amendment	Date
A	PLANNING	07.03.2024
B	PLANNING	08.05.2024

DEVELOPMENT SUMMARY

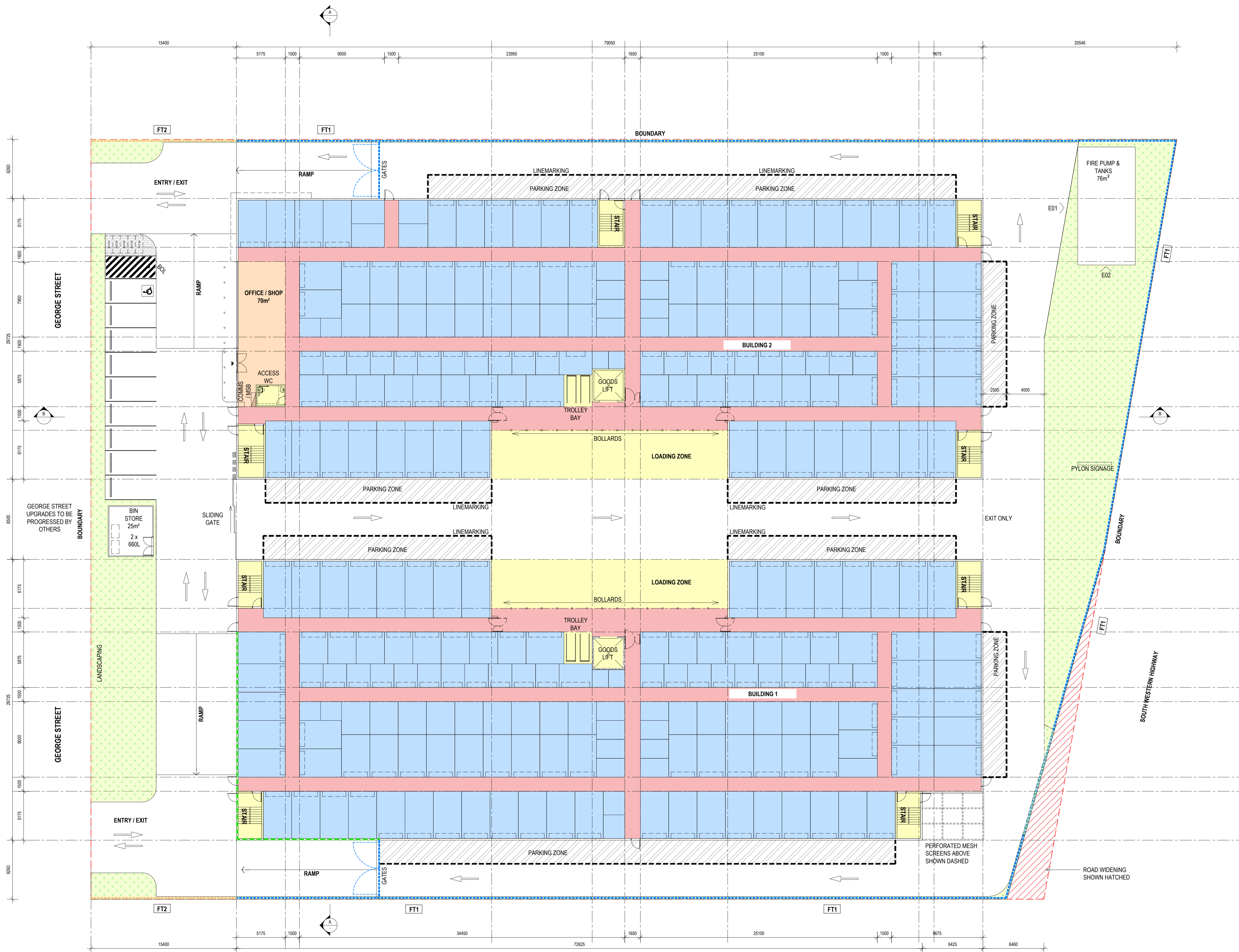
GROSS FLOOR AREA (GFA)	13490m ²
GROSS INTERNAL FLOOR AREA	13226m ²
SITE AREA	8660m ²
SITE COVERAGE	61%
OFFICE & BOX STORE	70m ²
GROUND FLOOR STORAGE UNITS	3224m ²
FIRST FLOOR STORAGE UNITS	3285m ²
SECOND FLOOR STORAGE UNITS	3516m ²
TOTAL NET LETTABLE AREA	10095m ²
NO. OF UNITS	937
AVERAGE UNIT SIZE	10.6m ²
ACCESS WC	7m ²
CORRIDOR	2734m ²
LOADING BAY	258m ²
TROLLEY BAY	20m ²
STAIRS, LIFT & RISER	402m ²
TOTAL	3421m ²
NLA EFFICIENCY (TOTAL NET LETTABLE AREA)	74.8%
TOTAL AREA HARDSTAND / CARPARKING AREAS	3350m ²
LANDSCAPED SPACE REQUIRED - MIN. 10% OF SITE AREA AREA REQUIRED = 868 AREA SUPPLIED = 738m ² = 8.5%	

BUILDING 1

GROUND FLOOR AREA SCHEDULE	
GROSS FLOOR AREA (GFA) (EXCLUDES LOADING BAY)	2188m ²
GROSS INTERNAL FLOOR AREA	2151m ²
TOTAL NET LETTABLE AREA (TOTAL AREA OF STORAGE UNITS)	1639m ²
NO. OF UNITS	140
AVERAGE UNIT SIZE	11.7m ²
CORRIDOR	437m ²
LOADING BAY	129m ²
STAIRS, LIFT & RISER	65m ²
TROLLEY BAY	64m ²
TOTAL	641m ²
NLA EFFICIENCY (TOTAL AREA OF STORAGE UNITS)	74.9%

BUILDING 2

GROUND FLOOR AREA SCHEDULE	
GROSS FLOOR AREA (GFA) (EXCLUDES LOADING BAY)	2220m ²
GROSS INTERNAL FLOOR AREA	2184m ²
TOTAL AREA OF STORAGE UNITS	1585m ²
OFFICE / BOX STORE	70m ²
NET LETTABLE AREA	1655m ²
NO. OF UNITS	138
AVERAGE UNIT SIZE	11.4m ²
ACCESS WC	7m ²
CORRIDOR	442m ²
LOADING BAY	129m ²
STAIRS, LIFT & RISER	69m ²
TROLLEY BAY	10m ²
TOTAL	658m ²
NLA EFFICIENCY (TOTAL AREA OF STORAGE UNITS + OFFICE & BOX SHOP)	74.5%



GROUND FLOOR PLAN
1:200 @ A1



ON Architecture Pty Ltd ABN: 71 627 522 043
242 Angus Street, SA 5000
MARK WIELD
0432 660 486
m.wield@onarchitecture.com.au

SELF STORAGE FACILITY
777 SOUTH WESTERN HIGHWAY
BYFORD WA 6122

DATE: MAY 2024
DRAWING: GROUND FLOOR PLAN
SCALE: 1:200 @ A1

DA03

PROJECT NUMBER: 202400032
DRAWN BY: S.G.
Ordinary Council Meeting - 15 July 2024

Revision	Amendment	Date
A	PLANNING	07.03.2024
B	PLANNING	08.05.2024

DEVELOPMENT SUMMARY

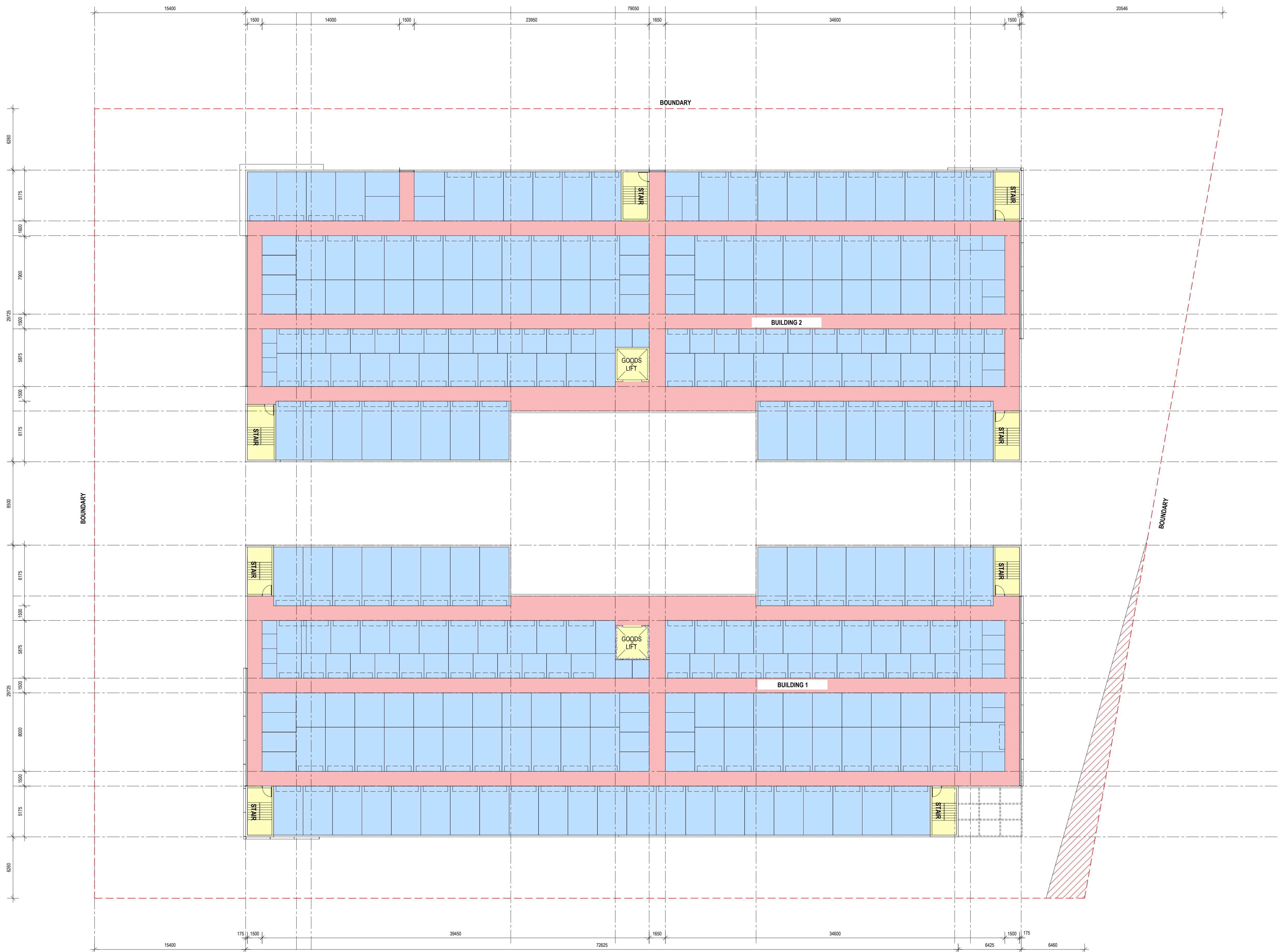
GROSS FLOOR AREA (GFA)	13490m ²
GROSS INTERNAL FLOOR AREA	13226m ²
SITE AREA	8660m ²
SITE COVERAGE	61%
OFFICE & BOX STORE	70m ²
GROUND FLOOR STORAGE UNITS	3224m ²
FIRST FLOOR STORAGE UNITS	3285m ²
SECOND FLOOR STORAGE UNITS	3516m ²
TOTAL NET LETTABLE AREA	10095m²
NO. OF UNITS	937
AVERAGE UNIT SIZE	10.6m ²
ACCESS WC	7m ²
CORRIDOR	2734m ²
LOADING BAY	258m ²
TROLLEY BAY	20m ²
STAIRS, LIFT & RISER	402m ²
TOTAL	3421m²
NLA EFFICIENCY (TOTAL NET LETTABLE AREA)	74.8%
TOTAL AREA HARDSTAND / CARPARKING AREAS	3350m²
LANDSCAPED SPACE REQUIRED - MIN. 10% OF SITE AREA	
AREA REQUIRED = 868	
AREA SUPPLIED = 738m ² = 8.5%	

BUILDING 1

FIRST FLOOR AREA SCHEDULE	
GROSS FLOOR AREA (GFA)	2192m ²
GROSS INTERNAL FLOOR AREA	2151m ²
NET LETTABLE AREA (TOTAL AREA OF STORAGE UNITS)	1636m ²
NO. OF UNITS	156
AVERAGE UNIT SIZE	10.4m ²
CORRIDOR	450m ²
STAIRS & LIFTS	65m ²
TOTAL	515m²
NLA EFFICIENCY (TOTAL AREA OF STORAGE UNITS)	74.6%

BUILDING 2

FIRST FLOOR AREA SCHEDULE	
GROSS FLOOR AREA (GFA)	2224m ²
GROSS INTERNAL FLOOR AREA	2183m ²
NET LETTABLE AREA	1649m ²
NO. OF UNITS	160
AVERAGE UNIT SIZE	10.3m ²
STAIRS, LIFT & RISER	60m ²
CORRIDOR	65m ²
TOTAL	534m²
NLA EFFICIENCY (TOTAL AREA OF STORAGE UNITS)	74.1%



FIRST FLOOR PLAN
1:200 @ A1



ON Architecture Pty Ltd ABN: 71 627 522 043
242 Angus Street, SA 5000
MARK NIELD
0432 660 486
m.nield@onarchitecture.com.au

SELF STORAGE FACILITY
777 SOUTH WESTERN HIGHWAY
BYFORD WA 6122

DATE: MARCH 2024
DRAWING: FIRST FLOOR PLAN
SCALE: 1:200 @ A1

DA04

PROJECT NUMBER: 202400032
DRAWN BY: S.G.
Ordinary Council Meeting - 15 July 2024

Revision	Amendment	Date
A	PLANNING	07.03.2024
B	PLANNING	08.05.2024

DEVELOPMENT SUMMARY

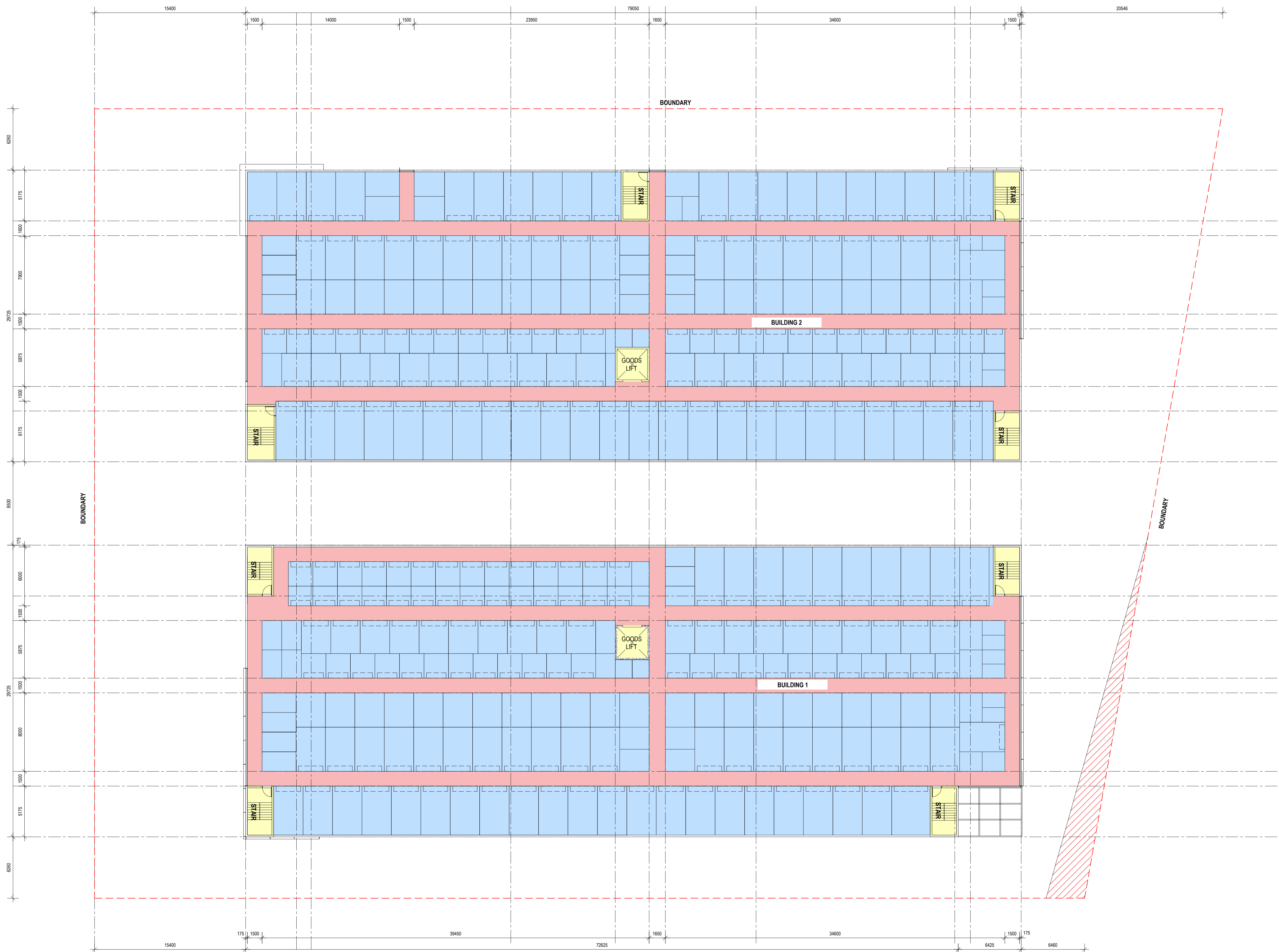
GROSS FLOOR AREA (GFA)	13490m ²
GROSS INTERNAL FLOOR AREA	13226m ²
SITE AREA	8660m ²
SITE COVERAGE	61%
OFFICE & BOX STORE	70m ²
GROUND FLOOR STORAGE UNITS	3224m ²
FIRST FLOOR STORAGE UNITS	3285m ²
SECOND FLOOR STORAGE UNITS	3516m ²
TOTAL NET LETTABLE AREA	10095m²
NO. OF UNITS	937
AVERAGE UNIT SIZE	10.6m ²
ACCESS WC	7m ²
CORRIDOR	2734m ²
LOADING BAY	258m ²
TROLLEY BAY	20m ²
STAIRS, LIFT & RISER	402m ²
TOTAL	3421m²
NLA EFFICIENCY (TOTAL NET LETTABLE AREA)	74.8%
TOTAL AREA HARDSTAND / CARPARKING AREAS	3350m²
LANDSCAPED SPACE REQUIRED - MIN. 10% OF SITE AREA	
AREA REQUIRED = 868	
AREA SUPPLIED = 738m ² = 8.5%	

BUILDING 2

SECOND FLOOR AREA SCHEDULE	
GROSS FLOOR AREA (GFA)	2349m ²
GROSS INTERNAL FLOOR AREA	2310m ²
TOTAL NET LETTABLE AREA (TOTAL AREA OF STORAGE UNITS)	1802m²
NO. OF UNITS	164
AVERAGE UNIT SIZE	10.9m ²
CORRIDOR	439m ²
STAIRS, LIFT & RISER	69m ²
TOTAL	508m²
NLA EFFICIENCY (TOTAL AREA OF STORAGE UNITS)	76.7%

BUILDING 1

SECOND FLOOR AREA SCHEDULE	
GROSS FLOOR AREA (GFA)	2317m ²
GROSS INTERNAL FLOOR AREA	2279m ²
NET LETTABLE AREA (TOTAL AREA OF STORAGE UNITS)	1714m²
NO. OF UNITS	179
AVERAGE UNIT SIZE	9.5m ²
CORRIDOR	500m ²
STAIRS & LIFTS	65m ²
TOTAL	565m²
NLA EFFICIENCY (TOTAL AREA OF STORAGE UNITS)	73.9%



SECOND FLOOR PLAN
1:200 @ A1



ON Architecture Pty Ltd ABN: 71 627 522 043
242 Angus Street, SA 5000
MARK NIELD
0432 660 486
m.nield@onarchitecture.com.au

SELF STORAGE FACILITY
777 SOUTH WESTERN HIGHWAY
BYFORD WA 6122

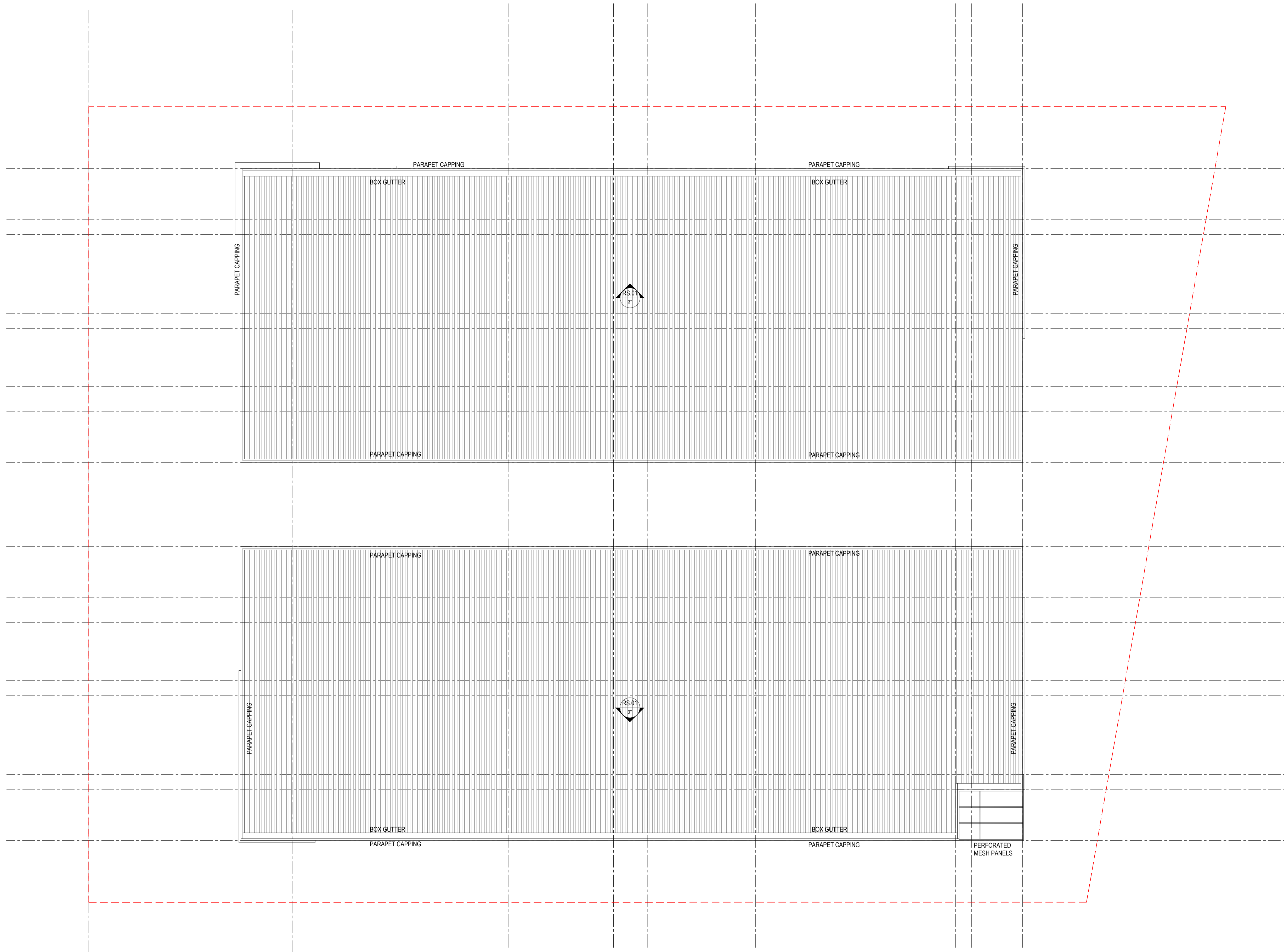
DATE: MAY 2024
DRAWING: SECOND FLOOR PLAN
SCALE: 1:200 @ A1

DA05

PROJECT NUMBER: 202400032
DRAWN BY: S.G.
Ordinary Council Meeting - 15 July 2024

LEGEND

RS.01 ROOF SHEETING
 KINGKLIP 700 (OR SIMILAR PROFILE),
 GALVANIZED FINISH



ROOF PLAN
 1:200 @ A1

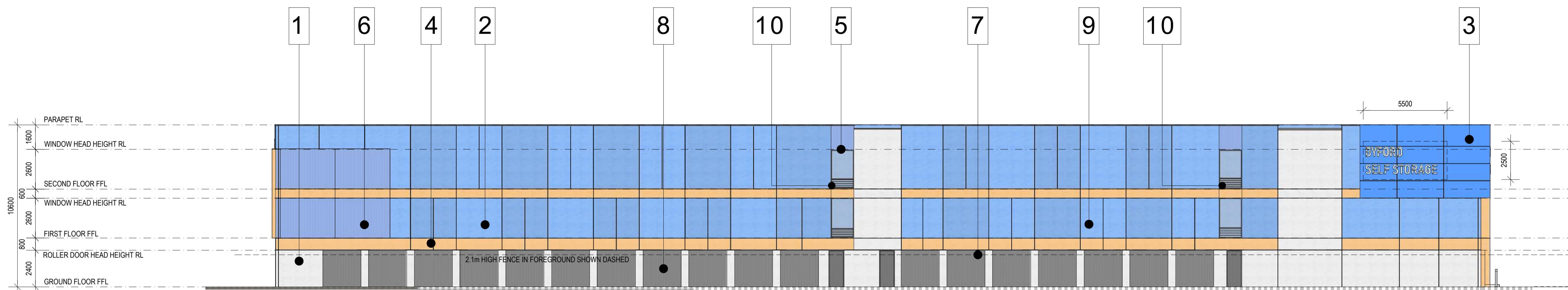


SELF STORAGE FACILITY
 777 SOUTH WESTERN HIGHWAY
 BYFORD WA 6122

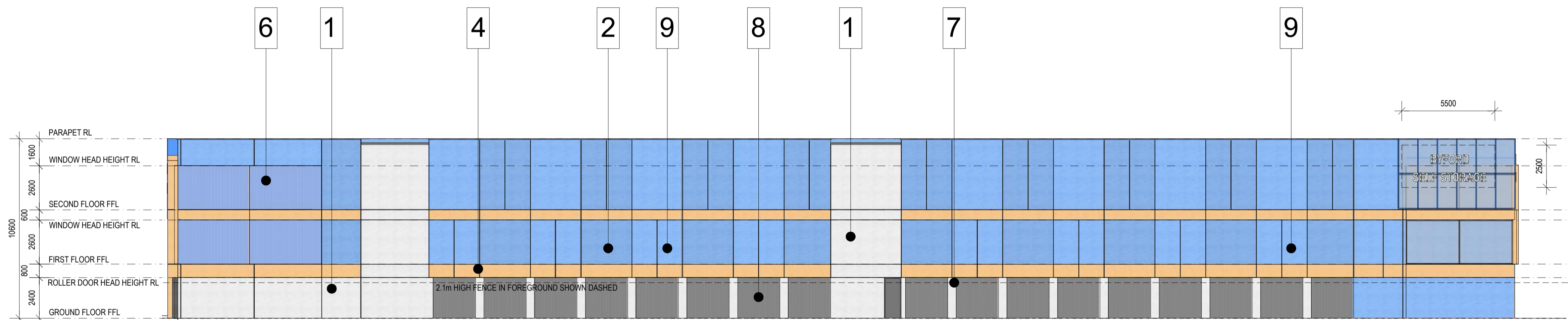
DATE: MAY 2024
 DRAWING: ROOF PLAN
 SCALE: 1:200 @ A1

DA06

PROJECT NUMBER: 202400032
 DRAWN BY: S.G



NORTHERN ELEVATION
 1:150 @ A1



SOUTHERN ELEVATION
 1:150 @ A1



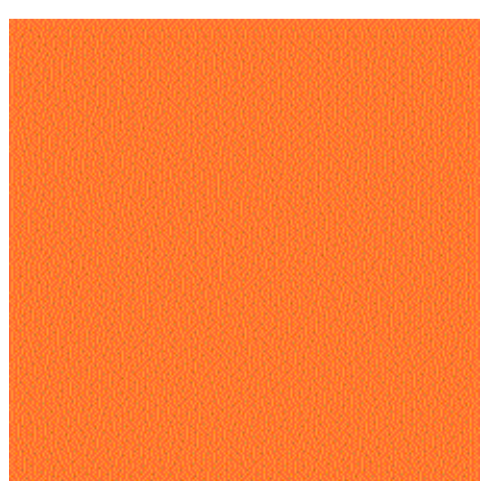
1 OFF-FORM PAINTED PRECAST CONCRETE PANELS COLOUR: T.B.C



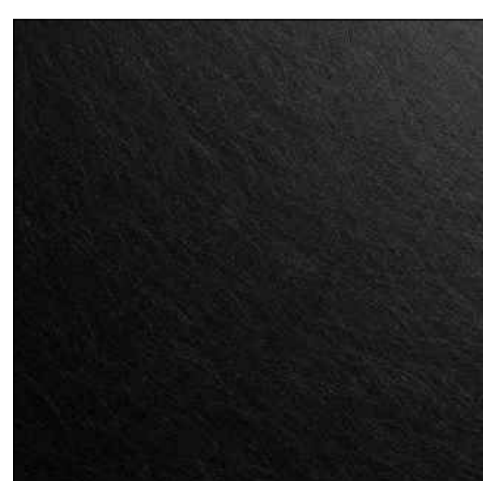
2 OFF-FORM PAINTED PRECAST CONCRETE PANELS COLOUR: SKY BLUE T.B.C



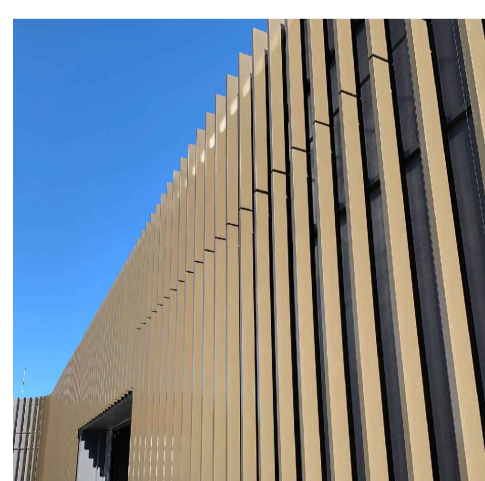
3 EXTERNAL ALUMINIUM CLADDING COLOUR: SKY BLUE OR SIMILAR



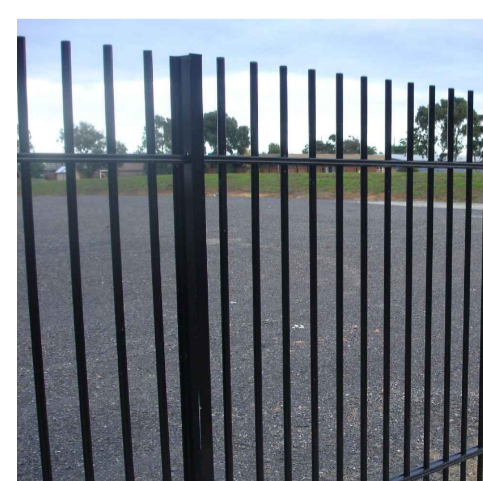
4 OFF-FORM PAINTED PRECAST CONCRETE PANELS COLOUR:T.B.C



5 BLACK POWDERCOATED ALUMINIUM



6 FACADE BLADES COLOUR: T.B.C



7 BLACK P/COAT ROD TOP PERIMETER FENCING



8 COMMERCIAL ROLLER DOOR FINISH: COLORBOND MONUMENT



9 OFF-FORM PAINTED PRECAST CONCRETE PANELS COLOUR: SKY BLUE T.B.C



10 ALUMINIUM LOUVRES FINISH: MONUMENT OR SIMILAR



ON Architecture Pty Ltd ABN: 71 627 522 043
 242 Angus Street, SA 5000
 MASK WIELD
 0432 660 486
 m.mield@onarchitecture.com.au

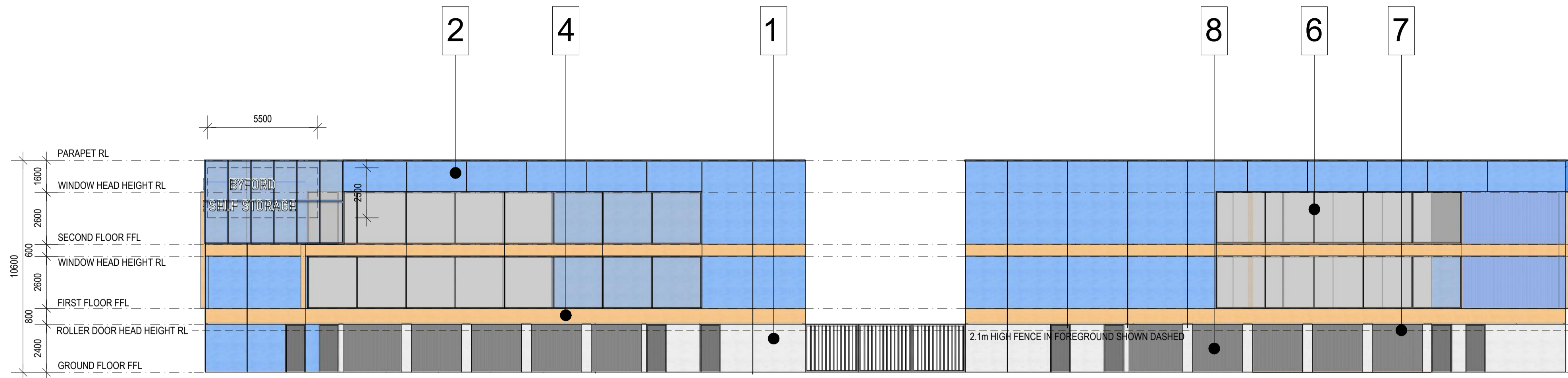
SELF STORAGE FACILITY
 777 SOUTH WESTERN HIGHWAY
 BYFORD WA 6122

DATE: MAY 2024
 DRAWING: ELEVATIONS
 SCALE: 1:150 @ A1

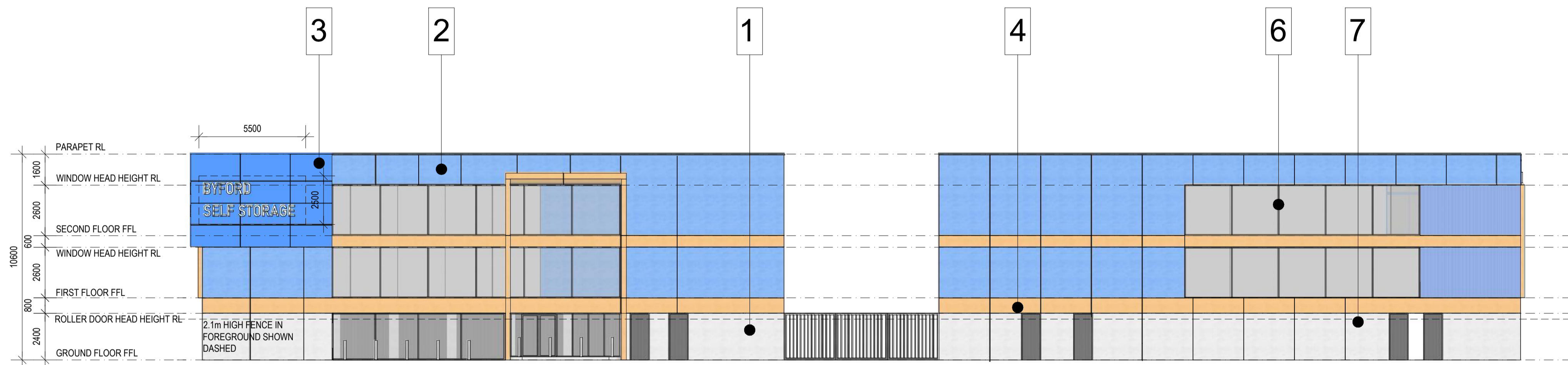
DA07

PROJECT NUMBER: 202400032
 DRAWN BY: S.G

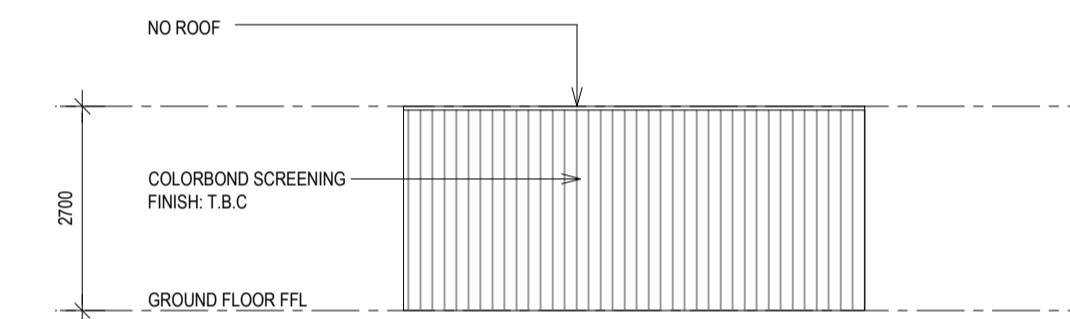
Revision	Amendment	Date
A	PLANNING	07.03.2024
B	PLANNING	08.05.2024



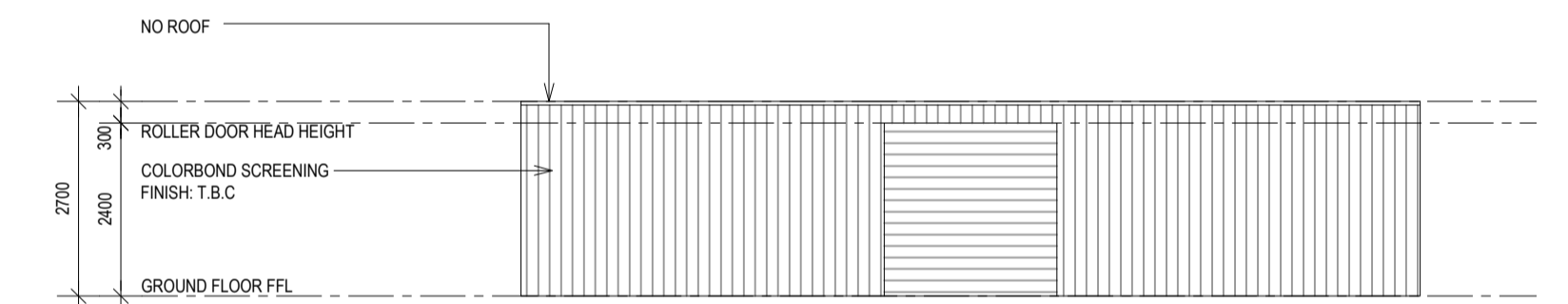
EASTERN ELEVATION
1:150 @ A1



WESTERN ELEVATION
1:150 @ A1



E02 - FIRE PUMPS & TANKS ELEVATION - T.B.C IF REQUIRED
1:100 @ A1



E01 - FIRE PUMPS & TANKS ELEVATION - T.B.C IF REQUIRED
1:100 @ A1



1 OFF-FORM PAINTED PRECAST CONCRETE PANELS COLOUR: T.B.C



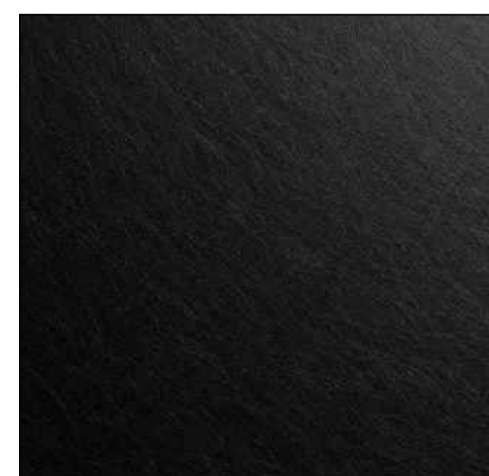
2 OFF-FORM PAINTED PRECAST CONCRETE PANELS COLOUR: SKY BLUE T.B.C



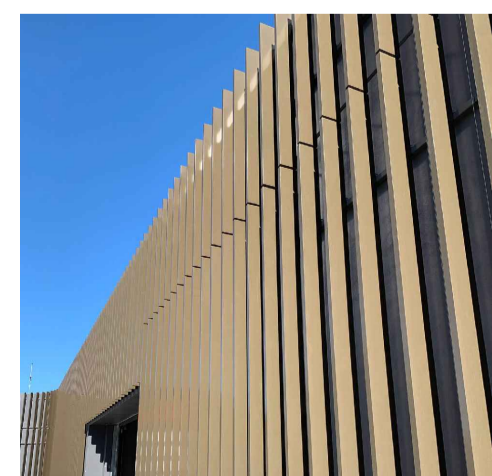
3 EXTERNAL ALUMINIUM CLADDING COLOUR: SKY BLUE OR SIMILAR



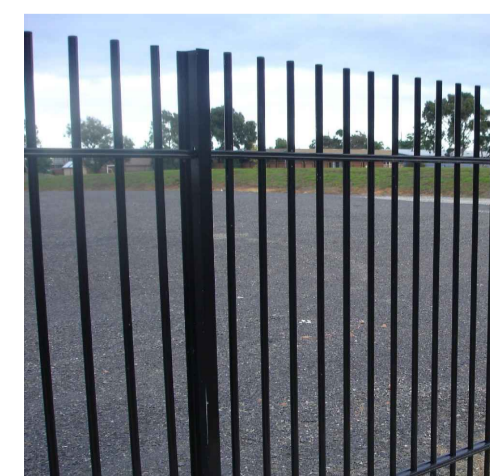
4 OFF-FORM PAINTED PRECAST CONCRETE PANELS COLOUR:T.B.C



5 BLACK POWDERCOATED ALUMINIUM



6 FACADE BLADES COLOUR: T.B.C



7 BLACK P/COAT ROD TOP PERIMETER FENCING



8 COMMERCIAL ROLLER DOOR FINISH: COLORBOND MONUMENT



9 OFF-FORM PAINTED PRECAST CONCRETE PANELS COLOUR: SKY BLUE T.B.C



10 ALUMINIUM LOUVRES FINISH: MONUMENT OR SIMILAR



ON Architecture Pty Ltd ABN: 71 627 522 043
242 Angas Street, SA 5000
MASK NIELD
0432 680 486
m.nield@onarchitecture.com.au

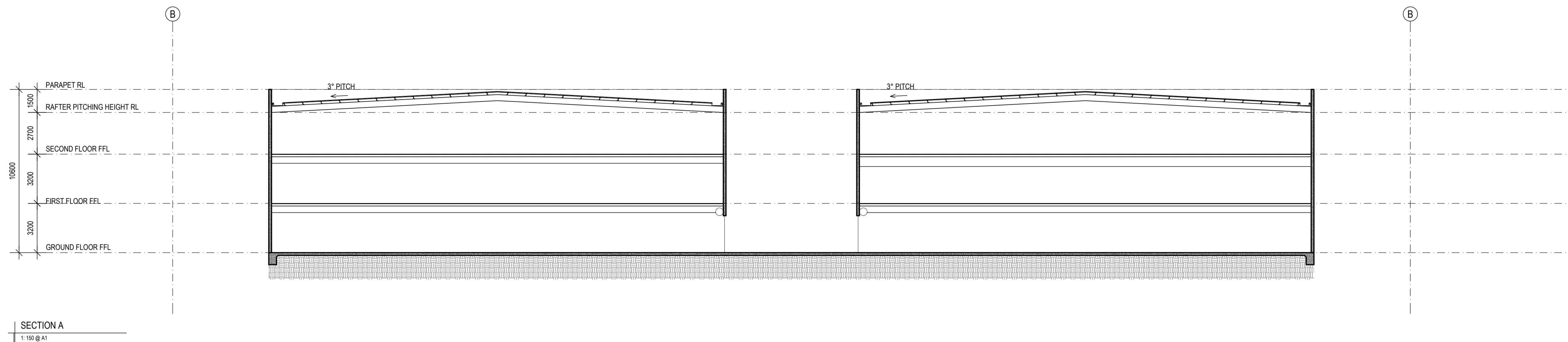
SELF STORAGE FACILITY
777 SOUTH WESTERN HIGHWAY
BYFORD WA 6122

DATE: MAY 2024
DRAWING: ELEVATIONS
SCALE: 1:150 @ A1

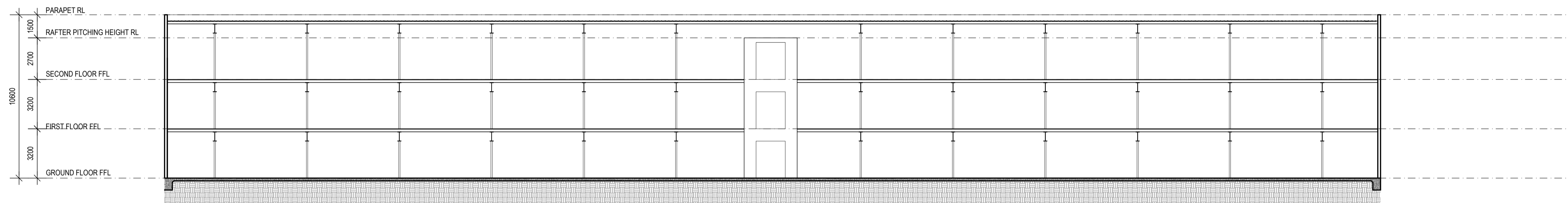
DA08

PROJECT NUMBER: 202400032
DRAWN BY: S.G

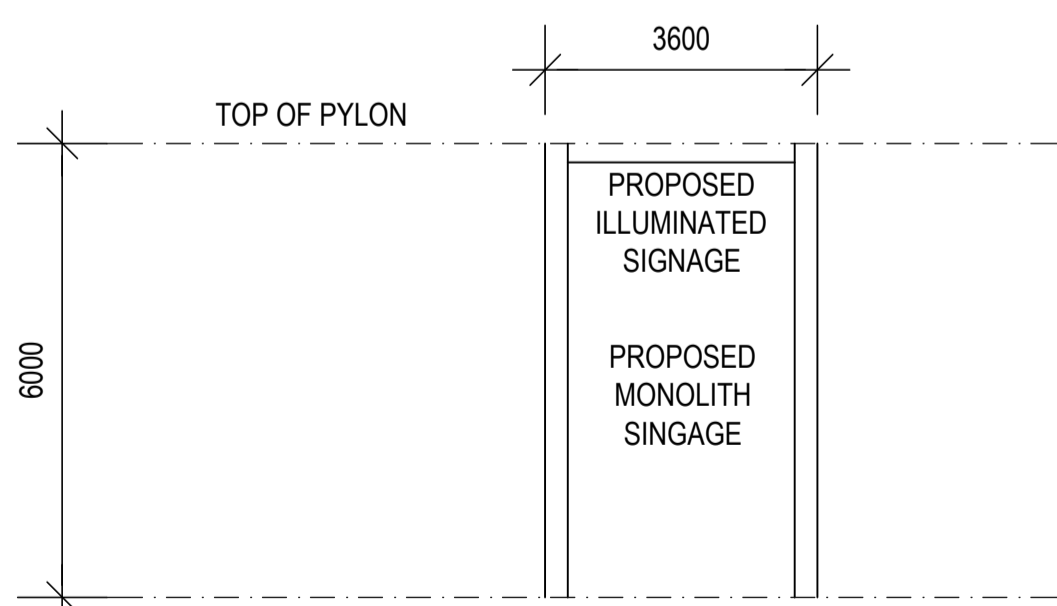
Revision	Amendment	Date
A	PLANNING	07.03.2024
B	PLANNING	08.05.2024



SECTION A
1:150 @ A1



SECTION B
1:150 @ A1



PROPOSED SIGNAGE PYLON
1:100 @ A1



ON Architecture Pty Ltd ABN: 71 627 522 043
242 Argus Street, SA 5000
MASK NIELD
0432 680 486
m.nield@onarchitecture.com.au

SELF STORAGE FACILITY
777 SOUTH WESTERN HIGHWAY
BYFORD WA 6122

DATE: MAY 2024
DRAWING: SECTIONS
SCALE: 1:150 @ A1

DA09

PROJECT NUMBER: 202400032
DRAWN BY: S.G

